

See Sheet 1-A For Index of
See Sheet 1-B For Conventional Symbols

DIVISION OF HIGHWAYS

FORSYTH COUNTY

LOCATION: I-40 AT (SR 1101) HARPER ROAD
INTERCHANGE, APPROX. 0.9 MILES EAST
OF THE YADKIN RIVER

TYPE OF WORK: STRUCTURE, GRADING, WIDENING,
PAVING, DRAINAGE, AND SIGNALS

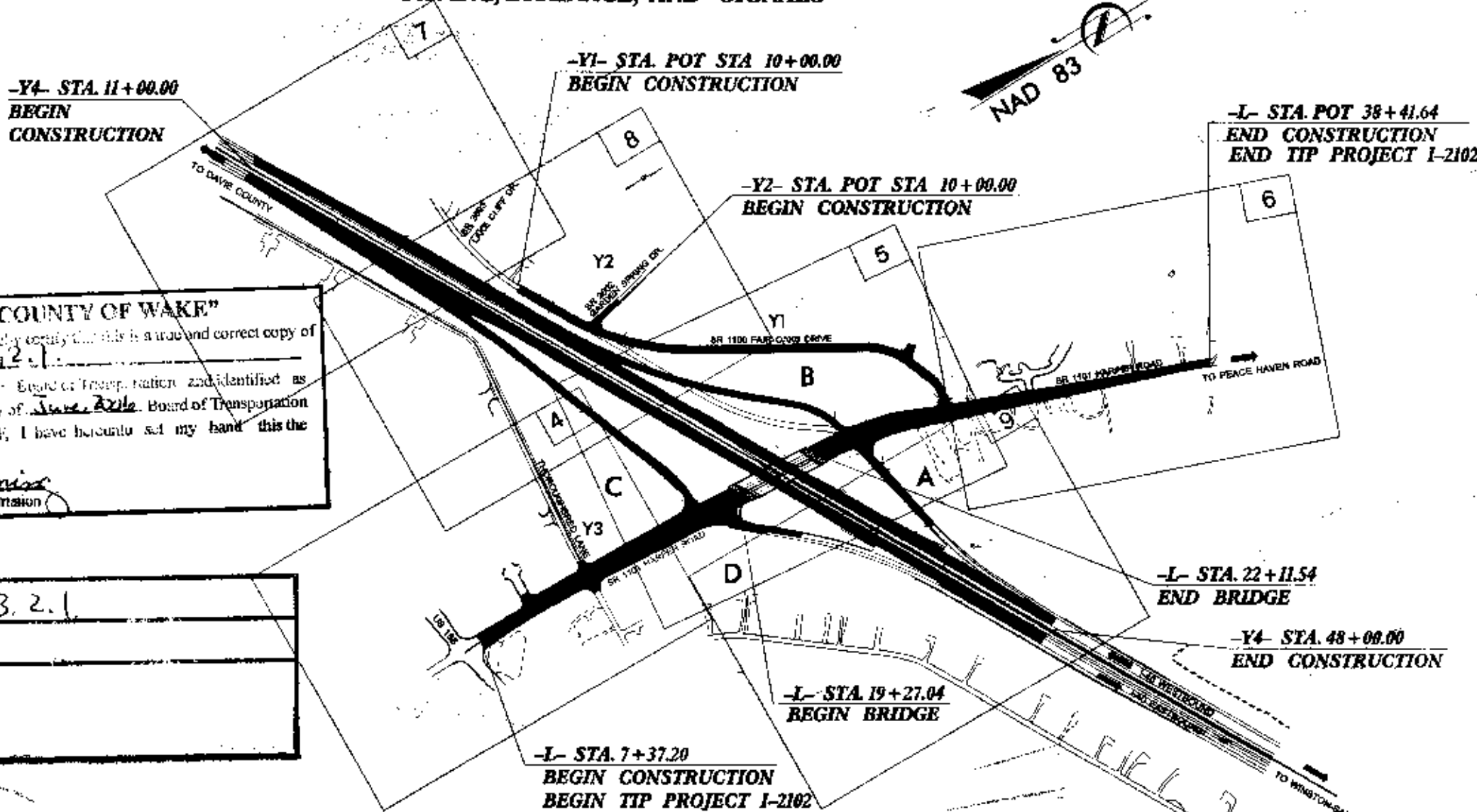
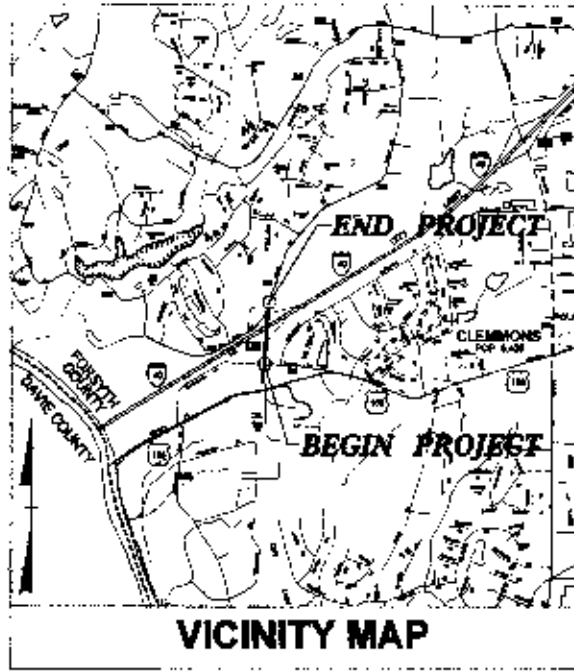
5157 0

FEE \$56.00

FORSYTH CO, NC
PRESENTED & RECORDED:
06-12-2006 02:00 PM
DICKIE C WOOD
REGISTER OF DEEDS
By: PATSY RUTH DAVIS DEPT
BK: H 2
PG: 30-37

STATE	STATE PROJECT NUMBER	SHEET	TOTAL SHEETS
N.C.	I-2102	1	
STATE FUND NO.	F.A.P. NO.	DESCRIPTION	
34153.1.1	IMF-40-3(10)182	P.E.	
34153.2.1	IMF-40-3(10)182	R/W	
34153.3.2	IMF-40-3(10)182	CONST.	

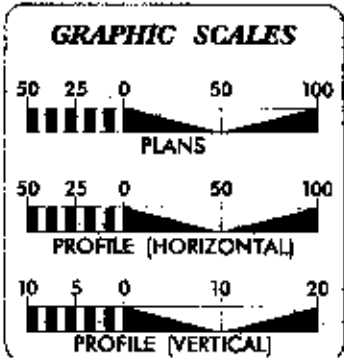
9
 CONTRACT: C201429 TIP PROJECT: I-2102



"STATE OF NORTH CAROLINA - COUNTY OF WAKE"
 As Custodian of the minutes of the Board of Transportation I do hereby certify that this is a true and correct copy of Plan Sheet 4153.2.1 of the final plans for Project 4153.2.1 said plan sheet having been approved and adopted by the Board of Transportation and identified as Addendum 6th to the minutes of the 1st day of June, 2006 Board of Transportation meeting on file in my office. IN TESTIMONY WHEREOF, I have hereunto set my hand this the 1 day of June, 2006
James Dennis
 Secretary to Board of Transportation

PROJECT	34153.2.1
PRIMARY ROAD	I-40
CONNECTING ROADS	SR 1101

DESIGN EXCEPTION VERTICAL CURVATURE
 THIS IS A CONTROLLED-ACCESS PROJECT WITH ACCESS BEING LIMITED TO INTERCHANGES.



DESIGN DATA

ADT 2004 =	6580
ADT 2025 =	13300
DHV =	10 %
D =	60 %
T =	3 % *
V =	45 MPH
* TTST 1%	DUAL 2%

PROJECT LENGTH

TOTAL LENGTH ROADWAY TIP PROJECT I-2102 =	0.534 MILES
TOTAL STRUCTURE LENGTH =	0.054 MILES
TOTAL LENGTH STATE TIP PROJECT I-2102 =	0.588 MILES

Prepared in the Office of
DIVISION OF HIGHWAYS
 NINTH DIVISION DESIGN / CONSTRUCT OFFICE
 375 Siler Creek Parkway
 WINSTON-SALEM, NORTH CAROLINA 27127

RIGHT OF WAY DATE: **DAVID W. SPAINHOUR, P.E.**
 AUGUST 15, 2003
 DIVISION OPERATIONS ENGINEER

LETTING DATE: **EVAN E. ANDREWS, P.E.**
 MAY 16, 2006
 DIVISION DESIGN/CONSTRUCT ENGINEER

HYDRAULICS ENGINEER

DAVID W. SPAINHOUR, P.E.
 SEAL 12575
 CHIEF ENGINEER

EVAN E. ANDREWS, P.E.
 SEAL 27446
 ENGINEER

DIVISION OF HIGHWAYS
 STATE OF NORTH CAROLINA

DAVID W. SPAINHOUR, P.E.
 STATE DESIGN ENGINEER

DEPARTMENT OF TRANSPORTATION
 FEDERAL HIGHWAY ADMINISTRATION

APPROVED
 DIVISION ADMINISTRATOR

STATE OF NORTH CAROLINA
DIVISION OF HIGHWAYS

CONVENTIONAL SYMBOLS

*S.U.E = SUBSURFACE UTILITY ENGINEER

ROADS & RELATED ITEMS

Edge of Pavement	-----
Curb	-----
Prop. Slope Stakes Cut	-----
Prop. Slope Stakes Fill	-----
Prop. Woven Wire Fence	-----
Prop. Chain Link Fence	-----
Prop. Barbed Wire Fence	-----
Prop. Wheelchair Ramp	-----
Curb Cut for Future Wheelchair Ramp	-----
Exist. Guardrail	-----
Prop. Guardrail	-----
Exist. Cable Guiderail	-----
Prop. Cable Guiderail	-----
Equality Symbol	-----
Pavement Removal	-----

RIGHT OF WAY

Baseline Control Point	-----
Existing Right of Way Marker	-----
Exist. Right of Way Line w/Marker	-----
Prop. Right of Way Line with Proposed R/W Marker (Iron Pin & Cap)	-----
Prop. Right of Way Line with Proposed (Concrete or Granite) R/W Marker	-----
Exist. Control of Access Line	-----
Prop. Control of Access Line	-----
Exist. Easement Line	-----
Prop. Temp. Construction Easement Line	-----
Prop. Temp. Drainage Easement Line	-----
Prop. Perm. Drainage Easement Line	-----

HYDROLOGY

Stream or Body of Water	-----
Flow Arrow	-----
Disappearing Stream	-----
Spring	-----
Swamp Marsh	-----
Shoreline	-----
Falls, Rapids	-----
Prop Lateral, Tail, Head Ditches	-----

STRUCTURES

MAJOR	
Bridge, Tunnel, or Box Culvert	-----
Bridge Wing Wall, Head Wall and End Wall	-----

MINOR	
Head & End Wall	-----
Pipe Culvert	-----
Footbridge	-----
Drainage Boxes	-----
Paved Ditch Gutter	-----

UTILITIES

Exist. Pole	-----
Exist. Power Pole	-----
Prop. Power Pole	-----
Exist. Telephone Pole	-----
Prop. Telephone Pole	-----
Exist. Joint Use Pole	-----
Prop. Joint Use Pole	-----
Telephone Pedestal	-----
Cable TV Pedestal	-----
Hydrant	-----
Satellite Dish	-----
Exist. Water Valve	-----
Sewer Clean Out	-----
Power Manhole	-----
Telephone Booth	-----
Water Manhole	-----
Light Pole	-----
H-Frame Pole	-----
Power Line Tower	-----
Pole with Base	-----
Gas Valve	-----
Gas Meter	-----
Telephone Manhole	-----
Power Transformer	-----
Sanitary Sewer Manhole	-----
Storm Sewer Manhole	-----
Tank, Water, Gas, Oil	-----
Water Tank With Legs	-----
Traffic Signal Junction Box	-----
Fiber Optic Splice Box	-----
Television or Radio Tower	-----
Utility Power Line Connects to Traffic Signal Lines Cut Into the Pavement	-----

Recorded Water Line	-----
Designated Water Line (S.U.E.*)	-----
Sanitary Sewer	-----
Recorded Sanitary Sewer Force Main	-----
Designated Sanitary Sewer Force Main(S.U.E.*)	-----
Recorded Gas Line	-----
Designated Gas Line (S.U.E.*)	-----
Storm Sewer	-----
Recorded Power Line	-----
Designated Power Line (S.U.E.*)	-----
Recorded Telephone Cable	-----
Designated Telephone Cable (S.U.E.*)	-----
Recorded UG Telephone Conduit	-----
Designated UG Telephone Conduit (S.U.E.*)	-----
Unknown Utility (S.U.E.*)	-----
Recorded Television Cable	-----
Designated Television Cable (S.U.E.*)	-----
Recorded Fiber Optics Cable	-----
Designated Fiber Optics Cable (S.U.E.*)	-----
Exist. Water Meter	-----
UG Test Hole (S.U.E.*)	-----
Abandoned According to UG Record	-----
End of Information	-----

BOUNDARIES & PROPERTIES

State Line	-----
County Line	-----
Township Line	-----
City Line	-----
Reservation Line	-----
Property Line	-----
Property Line Symbol	-----
Exist. Iron Pin	-----
Property Corner	-----
Property Monument	-----
Property Number	-----
Parcel Number	-----
Fence Line	-----
Existing Wetland Boundaries	-----
Proposed Wetland Boundaries	-----
Existing Endangered Animal Boundaries	-----
Existing Endangered Plant Boundaries	-----

BUILDINGS & OTHER CULTURE

Buildings	-----
Foundations	-----
Area Outline	-----
Gate	-----
Gas Pump Vent or U/G Tank Cap	-----
Church	-----
School	-----
Park	-----
Cemetery	-----
Dam	-----
Sign	-----
Wall	-----
Small Mine	-----
Swimming Pool	-----

TOPOGRAPHY

Loose Surface	-----
Hard Surface	-----
Change in Road Surface	-----
Curb	-----
Right of Way Symbol	-----
Guard Post	-----
Paved Walk	-----
Bridge	-----
Box Culvert or Tunnel	-----
Ferry	-----
Culvert	-----
Footbridge	-----
Trail, Footpath	-----
Light House	-----

VEGETATION

Single Tree	-----
Single Shrub	-----
Hedge	-----
Woods Line	-----
Orchard	-----
Vineyard	-----

RAILROADS

Standard Gauge	-----
RR Signal Milepost	-----
Switch	-----

"STATE OF NORTH CAROLINA - COUNTY OF WAKE"
 As Custodian of the minutes of the Board of Transportation, I do hereby certify that this is a true and correct copy of the minutes of the Board of Transportation, held on the 15th day of June, 2006, at Raleigh, North Carolina, and approved and attested by the Secretary to the Board of Transportation, *Sharon DeLoach*, Secretary to Board of Transportation.

PROJECT REFERENCE NO. 1-2102	SHEET NO. 4
R/W SHEET NO. 4	HYDRAULICS ENGINEER
ROADWAY DESIGN ENGINEER	SEAL 27448 DAVE PROPERTIES, INC.
	SEAL 12575 DAVE PROPERTIES, INC.

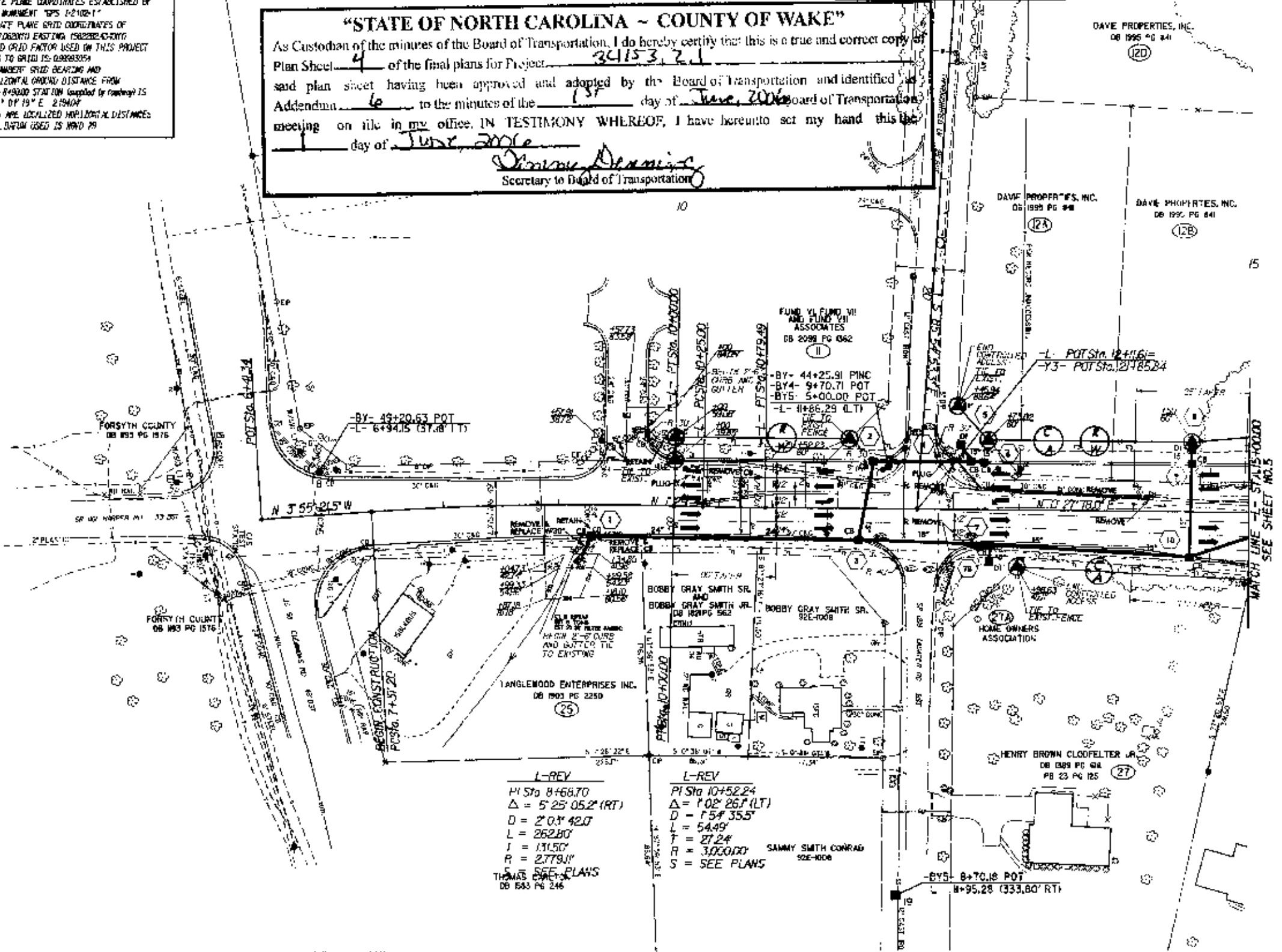
Notes:
(1) SEE SHEET NO. 10 FOR L-1 PROFILE

DATUM DESCRIPTION
 THE LOCALIZED COORDINATE SYSTEM DEVELOPED FOR THIS PROJECT IS BASED ON THE STATE PLANE COORDINATES ESTABLISHED BY NGS FOR MONUMENT "SPS 1-2102-1" WITH NAD 83 STATE PLANE GRID COORDINATES OF NORTHEAST CORNER (2002) EXISTING (2002) (2002) THE AVERAGE COMBINED GRID FACTOR USED ON THIS PROJECT (GROUND TO GRID) IS: 0.99993594
 THE N.C. STANDARD GRID BEARING AND LOCALIZED HORIZONTAL GRID DISTANCE FROM "SPS 1-2102-1" TO 4+8400.00 STATION (supplied by roadway) IS 0° 01' 19" E 2154.04'
 ALL LINEAR DIMENSIONS ARE LOCALIZED HORIZONTAL DISTANCES VERTICAL DATUM USED IS NAVD 83

"STATE OF NORTH CAROLINA - COUNTY OF WAKE"
 As Custodian of the minutes of the Board of Transportation, I do hereby certify that this is a true and correct copy of Plan Sheet 4 of the final plans for Project 34153, 2, 1 said plan sheet having been approved and adopted by the Board of Transportation and identified as Addendum 6 to the minutes of the 13th day of June, 2006 Board of Transportation meeting on file in my office. IN TESTIMONY WHEREOF, I have hereunto set my hand this 13th day of June, 2006
Shirley Dennis
 Secretary to Board of Transportation

SEE SHEET NO. 8
 MATCH LINE -Y3- STA. 17+44.93

REVISIONS



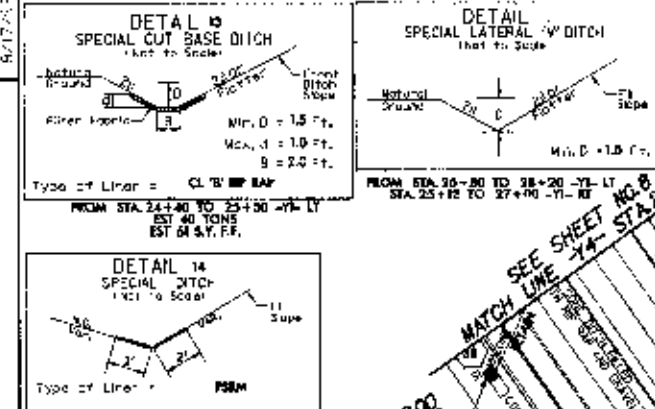
L-REV
 PI Sta 8+68.70
 $\Delta = 5' 25'' 05.2''$ (RT)
 $D = 2' 0.3'' 42.0''$
 $L = 262.80'$
 $J = 131.50'$
 $R = 2,779.11'$
 SEE PLANS
 THOMAS DUNCAN
 DB 553 PG 246

L-REV
 PI Sta 10+52.24
 $\Delta = 1' 02'' 26.1''$ (LT)
 $D = 1' 54'' 35.5''$
 $L = 54.49'$
 $T = 27.24'$
 $R = 3,000.00'$
 $S = \text{SEE PLANS}$
 SAMMY SMITH CONRAD
 502-1008

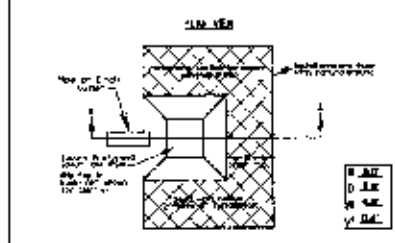
BY5- 8+70.18 POT
 8+95.28 (333.60' RT)

MATCH LINE -L- STA. 15+00.00
 SEE SHEET NO. 5

PROJECT REFERENCE NO. 1-2102	SHEET NO. E
ROADWAY DESIGN ENGINEER Sylvia F. Sinclair 27445	HYDRAULICS ENGINEER Edward V. Ferrell 27445
JEAN F. LYBROOK AND ROSENA F. DILLARD DB 1893 PG 2643	



PI Sta 14+90.04
 $\Delta = 30' 33" 47.3' (LT)$
 $D = 5' 43' 46.5'$
 $L = 533.43'$
 $T = 273.22'$
 $R = 1000.00'$
 $S = \text{SEE PLANS}$



PI Sta 25+21.05
 $\Delta = 37' 58" 08.0' (RT)$
 $D = 19' 05' 54.9'$
 $L = 159.80'$
 $T = 103.21'$
 $R = 300.00'$
 $S = \text{SEE PLANS}$

NOTES:
 (1) SEE SHEET 10 FOR L-PROFILE
 (2) SEE SHEET 11 FOR RAMP A-PROFILE
 (3) SEE SHEET 12 FOR RAMP B-PROFILE
 (4) SEE SHEET 13 FOR RAMP C-PROFILE
 (5) SEE SHEET 14 FOR RAMP D-PROFILE
 (6) SEE SHEET 15 FOR RAMP E-PROFILE
 (7) SEE SHEET 16 FOR RAMP F-PROFILE

FROM STA 2+00 TO 3+00 RAMP A-RT
 STA 1+00 TO 2+00 RAMP B-LT
 STA 3+00 TO 4+00 RAMP C-RT
 EST 64 S.Y.F.F.

RAMP 7B
 PI Sta 8+49.98
 $\Delta = 2' 32' 47.3'$
 $L = 200.00'$
 $T = 133.35'$
 $S = 66.68'$

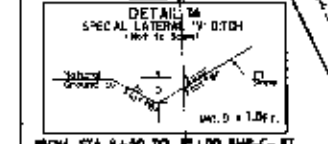
RAMP 1E
 PI Sta 12+33.76
 $\Delta = 42' 13' 30.1' (RT)$
 $D = 16' 22' 12.8'$
 $L = 257.94'$
 $T = 135.14'$
 $R = 350.00'$
 $S = \text{SEE PLANS}$

PI Sta 27+69.12
 $\Delta = 42' 08' 50.1' (RT)$
 $D = 38' 11' 49.9'$
 $L = 110.34'$
 $T = 57.80'$
 $R = 150.00'$
 $S = \text{SEE PLANS}$

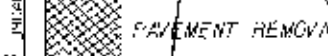
STATE OF NORTH CAROLINA - COUNTY OF WAKE

As Custodian of the archives of the Board of Transportation, I do hereby certify that this is a true and correct copy of Plan Sheet 34153.21 of the final plans for Project 34153.21 said plan sheet having been approved and adopted by the Board of Transportation and identified as Addendum 15 to the minutes of the 15 day of June 2016 Board of Transportation meeting on file in my office. IN TESTIMONY WHEREOF, I have hereunto set my hand this 15 day of June 2016.

Secretary to Board of Transportation



FROM STA 8+50 TO 10+00 RAMP C-RT
 STA 7+50 TO 8+50 RAMP D-LT
 STA 9+50 TO 10+00 RAMP E-RT
 STA 1+00 TO 2+00 RAMP F-LT
 EST 126 S.Y.F.F.



MATCH LINE -Y4- STA. 39+43.96 SEE SHEET NO. 9 MATCH LINE -RPA- STA. 100.00

REVISIONS

DATE: 2006 10 06
 DRAWN BY: [illegible]
 CHECKED BY: [illegible]

PROJECT REFERENCE NO. 1-2102	SHEET NO. 6
HW SHEET NO. 6	HYDRAULICS ENGINEER
ROADWAY DESIGN ENGINEER NORTH CAROLINA SEAL 27448 DAVID S. FLETCHER	HYDRAULICS ENGINEER NORTH CAROLINA SEAL 12575 DAVID S. FLETCHER

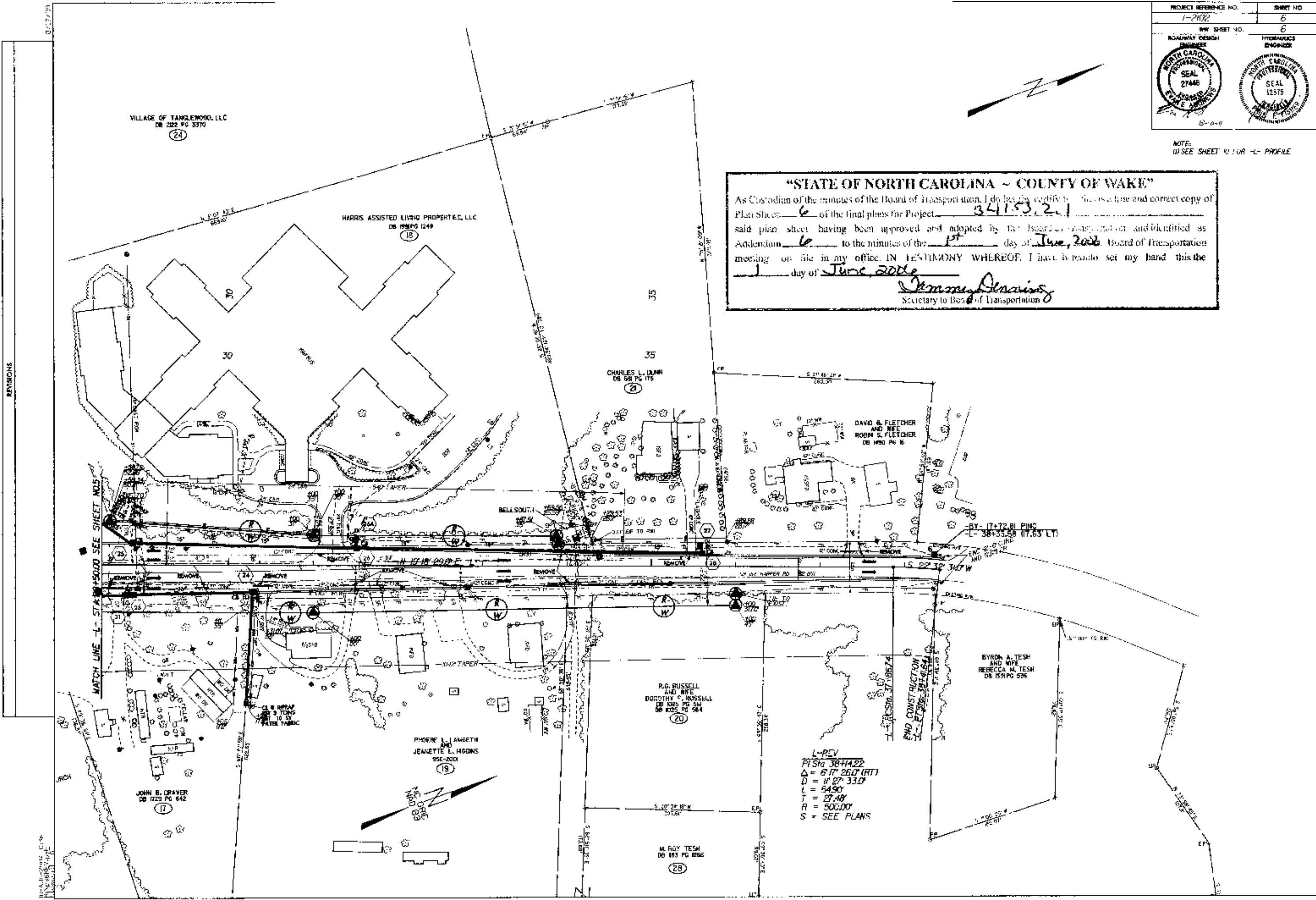


NOTE:
USE SHEET 1110R -L- PROFILE

"STATE OF NORTH CAROLINA - COUNTY OF WAKE"

As Custodian of the minutes of the Board of Transportation, I do hereby certify that this is a true and correct copy of Plan Sheet 6 of the final plans for Project 341.53.2.1 said plan sheet having been approved and adopted by the Board of Transportation and identified as Attachment 6 to the minutes of the 1st day of June, 2006 Board of Transportation meeting on file in my office. IN TESTIMONY WHEREOF, I have hereunto set my hand this the 1 day of June, 2006


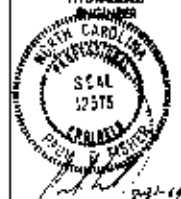
James Denning
Secretary to Board of Transportation



L-REV
 P1 Sta 38+4.22
 $\Delta = 6' 17" 26.0' (RT)$
 $D = 11' 27" 33.0'$
 $t = 64.90'$
 $Y = 27.48'$
 $R = 500.00'$
 S = SEE PLANS

REVISIONS

MATCH LINE - L- 1110R - SEE SHEET NOS.

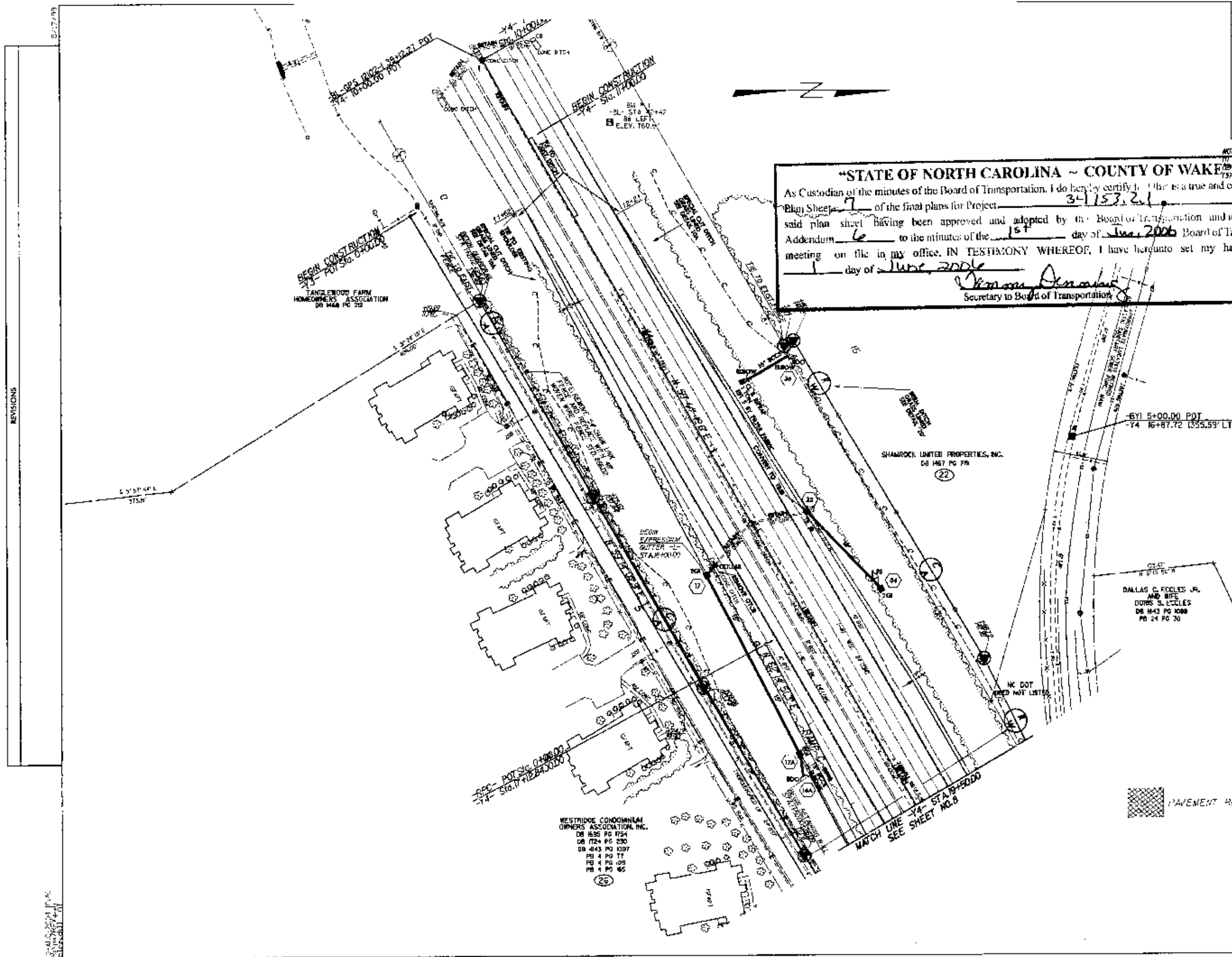
PROJECT REFERENCE NO. 1-2102	SHEET NO. 7
RDW SHEET NO.	HYDRAULICS SHEET NO.
	

STATE OF NORTH CAROLINA - COUNTY OF WAKE

As Custodian of the minutes of the Board of Transportation, I do hereby certify that this is a true and correct copy of Plan Sheet 7 of the final plans for Project 34153.21 Addendum 6 to the minutes of the 15th day of June, 2004 Board of Transportation meeting on file in my office. IN TESTIMONY WHEREOF, I have hereunto set my hand this the 1 day of June, 2004


Thomas Denahan
Secretary to Board of Transportation

NOTE:
 (1) SEE SHEET 13 FOR RAMP C PROFILE
 (2) SEE SHEET 13 FOR RAMP C PROFILE
 (3) SEE SHEET 11 FOR Y4 PROFILE



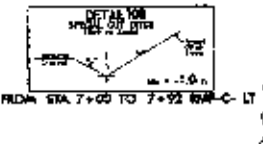
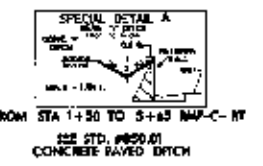
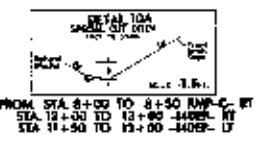
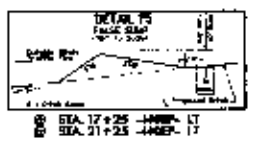
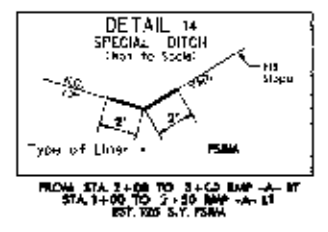
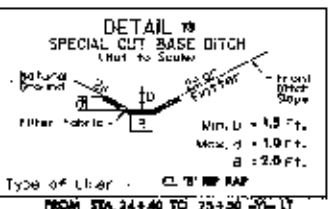
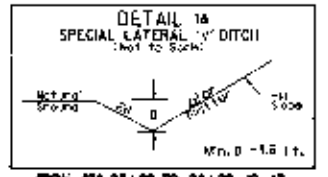
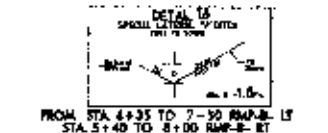
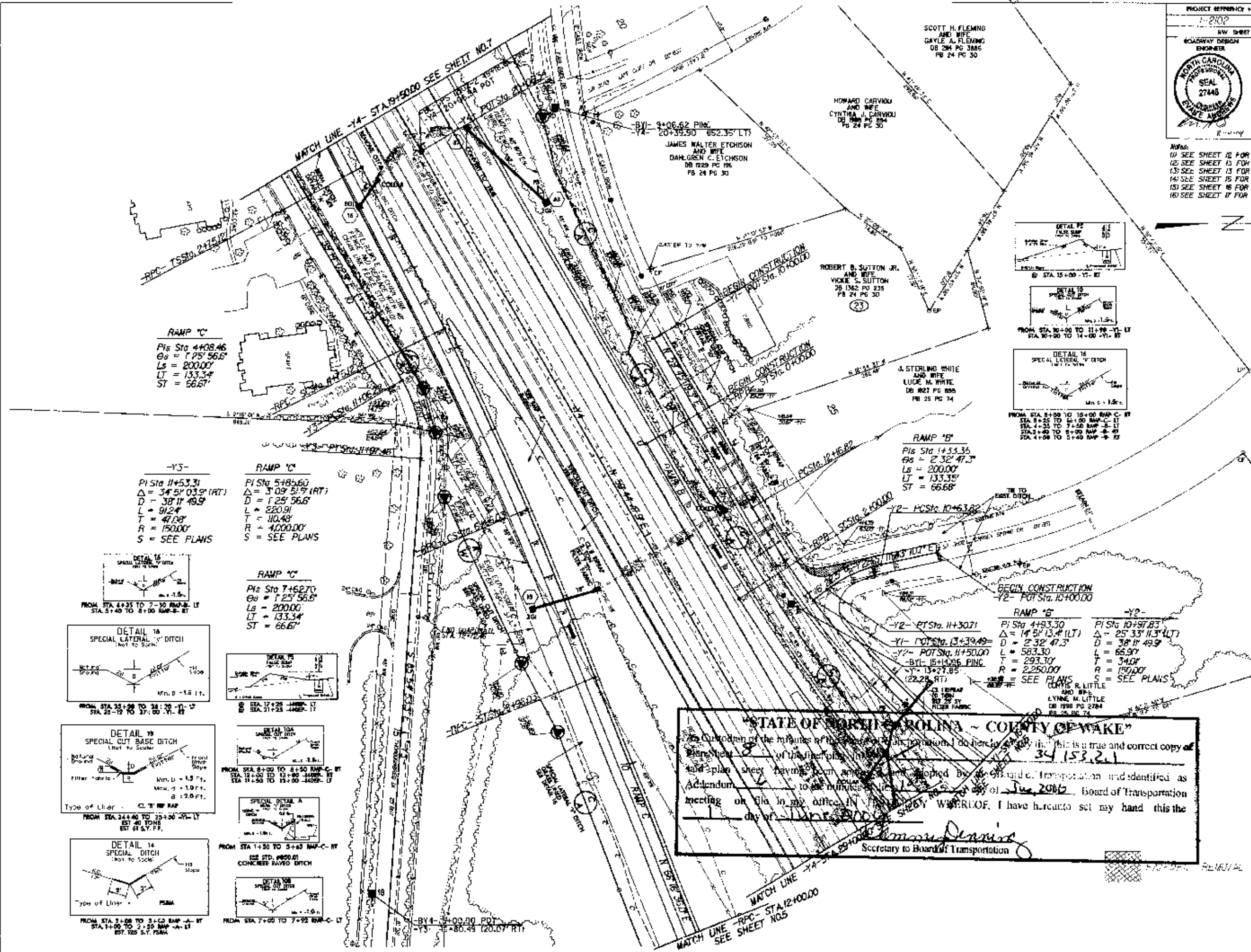
REVISIONS

WESTRIDGE CONDOMINIUM OWNERS ASSOCIATION, INC.
 DB 165 PG 1754
 DB 172 PG 230
 DB 443 PG 1007
 PB 4 PG 11
 PB 4 PG 109
 PB 4 PG 66

 PAVEMENT REMOVAL

PROJECT REFERENCE NO. 1-2102	SHEET NO. B
R/W SHEET NO. B	
ROADWAY DESIGN ENGINEER NORTH CAROLINA PROFESSIONAL SEAL 27448 DAVID A. FLEMING	HYDRAULICS ENGINEER NORTH CAROLINA PROFESSIONAL SEAL 2115 DAVID A. FLEMING

Notes:
 (1) SEE SHEET 12 FOR RAMP B- PROFILE
 (2) SEE SHEET 13 FOR RAMP C DELT- PROFILE
 (3) SEE SHEET 13 FOR RAMP C- PROFILE
 (4) SEE SHEET 15 FOR Y1- PROFILE
 (5) SEE SHEET 8 FOR Y2- PROFILE
 (6) SEE SHEET 17 FOR Y4- PROFILE





STATE OF NORTH CAROLINA - COUNTY OF WAKE

I, the Custodian of the minutes of the Board of Transportation, do hereby certify that this is a true and correct copy of the minutes of the Board of Transportation, held on the 30th day of June, 2002, at Raleigh, North Carolina, and identified as Addendum to the minutes of the Board of Transportation meeting on file in my office, IN WITNESS WHEREOF, I have hereunto set my hand this the 1st day of June, 2002.

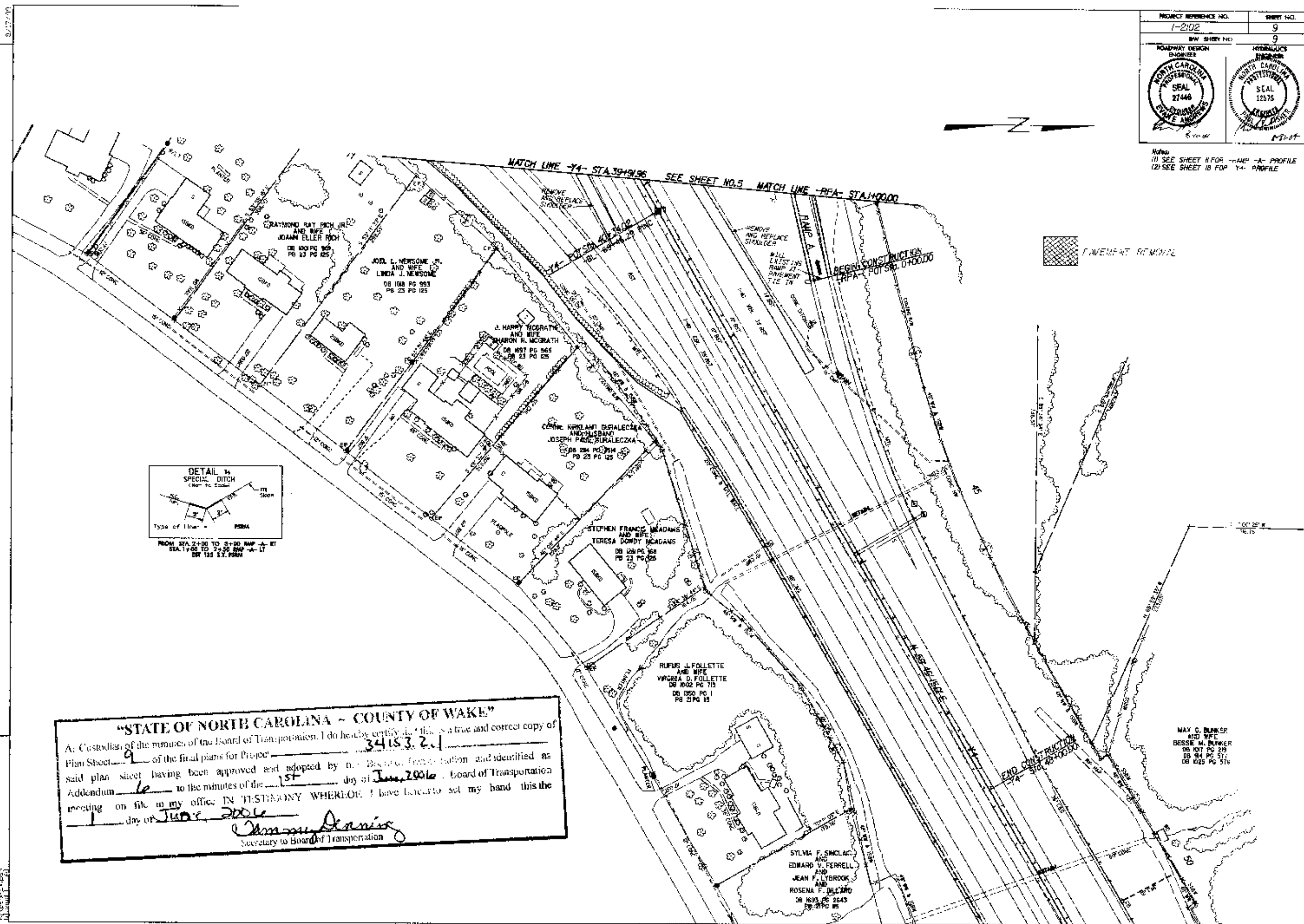
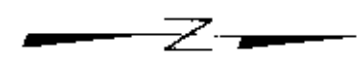
Charmaine Dennis
Secretary to Board of Transportation

REVISIONS

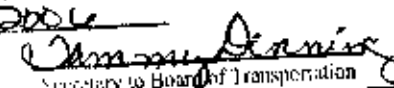
DATE: 6/1/02
BY: DAF

PROJECT REFERENCE NO. 1-2102	SHEET NO. 9
RAW SHEET NO. 9	
ROADWAY DESIGN ENGINEER 	HYDRAULICS ENGINEER 

Note:
 (1) SEE SHEET 8 FOR RAMP A-A PROFILE
 (2) SEE SHEET 10 FOR Y-A PROFILE



"STATE OF NORTH CAROLINA - COUNTY OF WAKE"

I, Custodian of the minutes of the Board of Transportation, I do hereby certify that this is a true and correct copy of
 Plan Sheet 9 of the final plans for Project 34183.2.1
 said plan sheet having been approved and adopted by the Board of Transportation and identified as
 Addendum 6 to the minutes of the 15th day of June, 2006, Board of Transportation
 meeting on file in my office. IN TESTIMONY WHEREOF, I have hereunto set my hand this the
1 day of June, 2006

 Secretary to Board of Transportation

MAY G. BUNKER
 AND WIFE
 BESSIE M. BUNKER
 DB 107 PG 218
 DB 84 PG 571
 DB 1025 PG 576

SYLVIA F. SIMCLAR
 AND
 EDWARD V. FERRELL
 AND
 JEAN F. LYBROOK
 AND
 ROSENA F. MULLARD
 DB 1693 PG 2643
 PG 2700 85

RUFUS J. FOLLETTE
 AND WIFE
 VIRGIEA D. FOLLETTE
 DB 1050 PG 1
 PG 21 PG 18

STEPHEN FRANCIS MCADAMS
 AND WIFE
 TERESA DORIS MCADAMS
 DB 128 PG 168
 PG 23 PG 125

CORNE KIRILANT DZIALIECKA
 AND MARIAN
 JOSEPH PAUL DZIALIECKA
 DB 284 PG 154
 PG 21 PG 125

J. HARRY MCCRATH
 AND WIFE
 SHARON N. MCCRATH
 DB 1037 PG 565
 PG 21 PG 125

JOEL L. NEWSOME, JR.
 AND WIFE
 LINDA J. NEWSOME
 DB 108 PG 93
 PG 25 PG 125

RAYMOND RAY BOCH JR.
 AND WIFE
 JOAAM ELLER BOCH
 DB 100 PG 165
 PG 23 PG 125