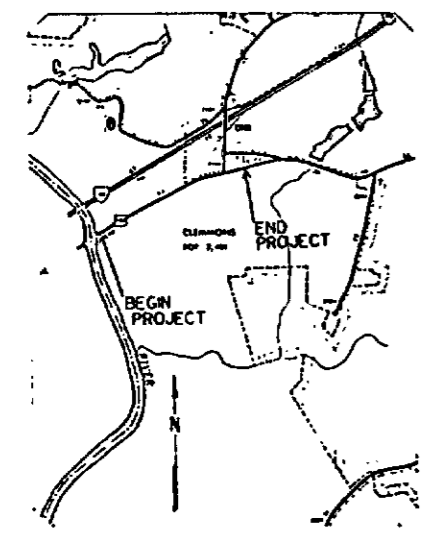


532

U-2311A  
PROJECT: 9.8091812

See Sheet 1-A For Index of Sheets  
See Sheet 1-B For Conventional Symbols



SYSTEM MAP SHOWING  
VICINITY OF STATE PROJECT 9.8091812  
SHEETING POINT - WHEATON-SALEM

# STATE OF NORTH CAROLINA DIVISION OF HIGHWAYS

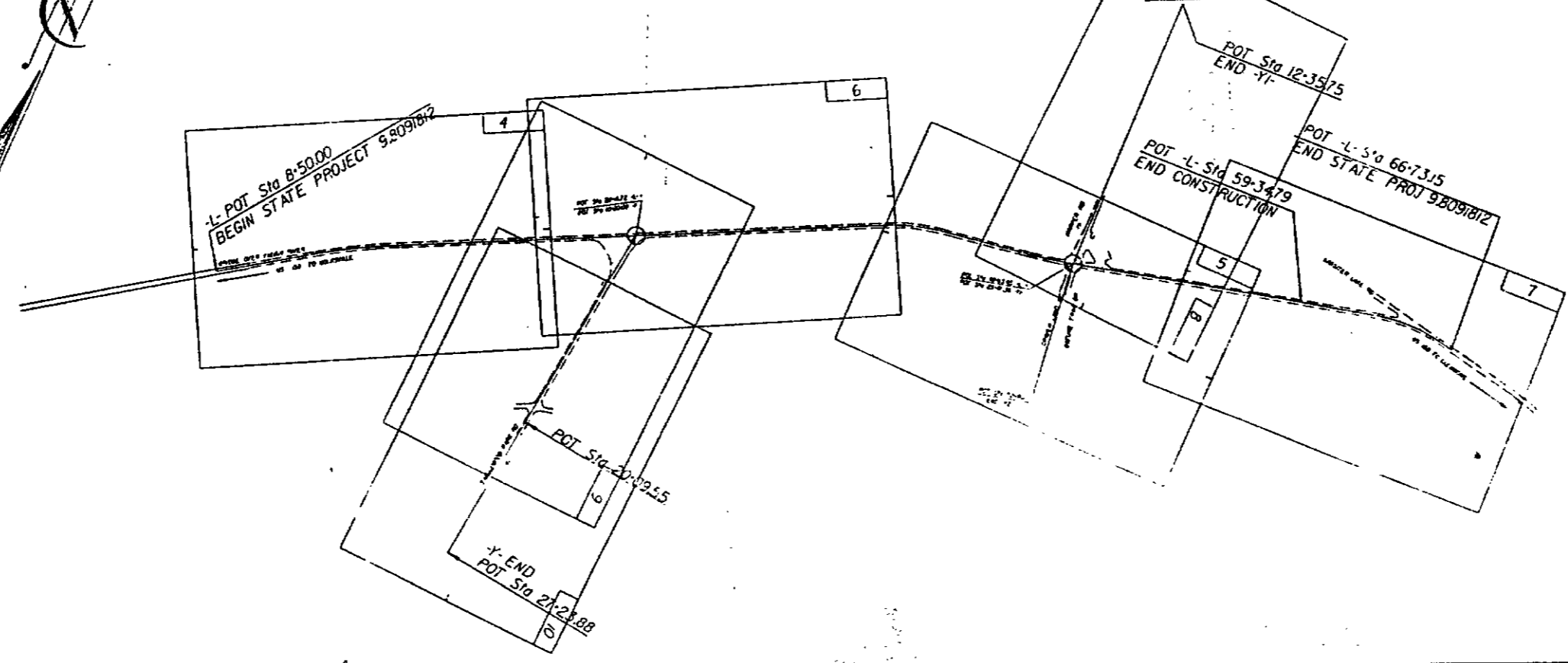
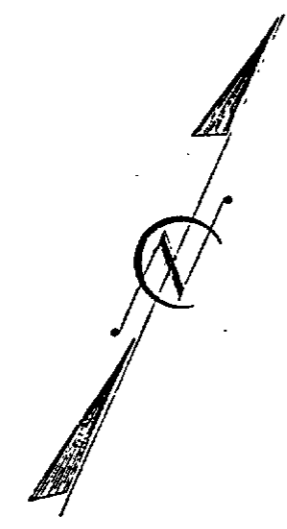
## FORSYTH

LOCATION: US 158 FROM YADKIN RIVER  
BRIDGE TO APPROX. 300' PAST  
LASSITER LAKE ROAD

TYPE OF WORK: GRADING, PAVING, CURB & CUTTER,  
THERMOPLASTIC PAVEMENT  
MARKING AND DRAINAGE

STATE	STATE PROJECT NUMBER	SHEET	TOTAL SHEETS
N.C.	9.8091812	1	24
STATE ROAD NO.	S.A.P.M. NO.	DESCRIPTION	
9.8091812		CONSTRUCTION	

PROJECT NO.	ROAD NUMBER
9.8091812	Yadkin River Bridge
	US. 158
SECONDARY ROAD	Lassiter Lake Road.

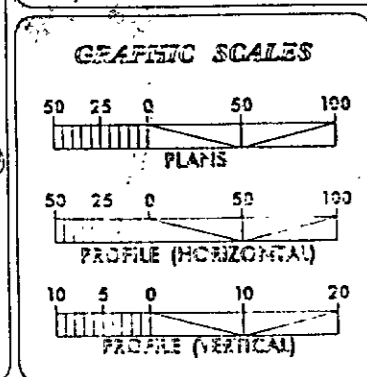


PRESENTED FOR  
REVIEW AND RECORD

'94 JUN 21 AS 39

"STATE OF NORTH CAROLINA - COUNTY OF WAKE"  
I, *Kathy Drayner*, do hereby certify that this is a true and correct copy of the final plans for Project 9.8091812, identified as *Yadkin River Bridge*, as shown on file in my office of the *3* day of *June*, 19*94*.  
In testimony whereof, I have hereunto set my hand and the seal of the Board of Transportation at *WAKE*, North Carolina, this *13* day of *June*, 19*94*.

*Kathy Drayner*  
Custodian of Minutes of



**DESIGN DATA**

ADT 1990	=	12,300
ADT 2010	=	22,500
DHV	=	10%
D	=	5%
T	=	3%
V	=	50 MPH

**PROJECT LENGTH**

1/4-MILE ROADWAY PROJECT	9.8091812	=	1.103 MILES
TOTAL LENGTH STATE PROJECT	9.8091812	=	1.103 MILES

Prepared in the Office of:  
**DIVISION OF HIGHWAYS**  
HENRY EUSTACE DESIGN-CONSTRUCT OFFICE  
WHEATON-SALEM, N.C.

**RIGHT OF WAY DATE:**  
MAY 17, 1974

**LETTING DATE:**  
MAY 17, 1974

**STATE HYDRAULICS ENGINEER**

*CONNIE K. MCGEE, P.E.*  
DESIGN-CONSTRUCT ENGINEER

**DESIGN ENGINEER**

*CONNIE K. MCGEE, P.E.*  
DESIGN-CONSTRUCT ENGINEER

**DIVISION OF HIGHWAYS**  
STATE OF NORTH CAROLINA

**TRANSPORTATION ENGINEER I**

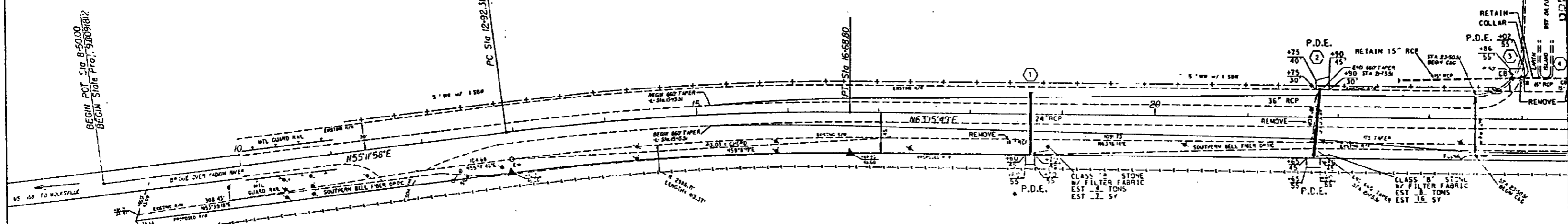
**DEPARTMENT OF TRANSPORTATION**  
FEDERAL HIGHWAY ADMINISTRATION

APPROVED FOR DIVISION ADMINISTRATION

533

PROJ. REFERENCE NO.	SHEET NO.	TOTAL SHEETS
98091812	4	
STATE PROJ. NO.	F.A. PROJ. NO.	DESCRIPTION
98091812		CONSTRUCTION

L  
 PI Sta 14+80.87  
 D = 8' 3" 51' (RT)  
 D = 2' 8" 3"  
 L = 376.49'  
 T = 188.56'  
 R = 2674.94'  
 PC Sta 12+92.31  
 PT Sta 16+68.80



(20)

FORSTH COUNTY  
 PG 1516  
 BLOCK 4204

NOTE III  
 CONSTRUCTION LIMITS NOT TO EXCEED  
 MAXIMUM OF 15' BEYOND PROPOSED R/W

PRESENTED FOR  
 REGISTRATION  
 AND RECORDING

94 JUN 21 A9:59

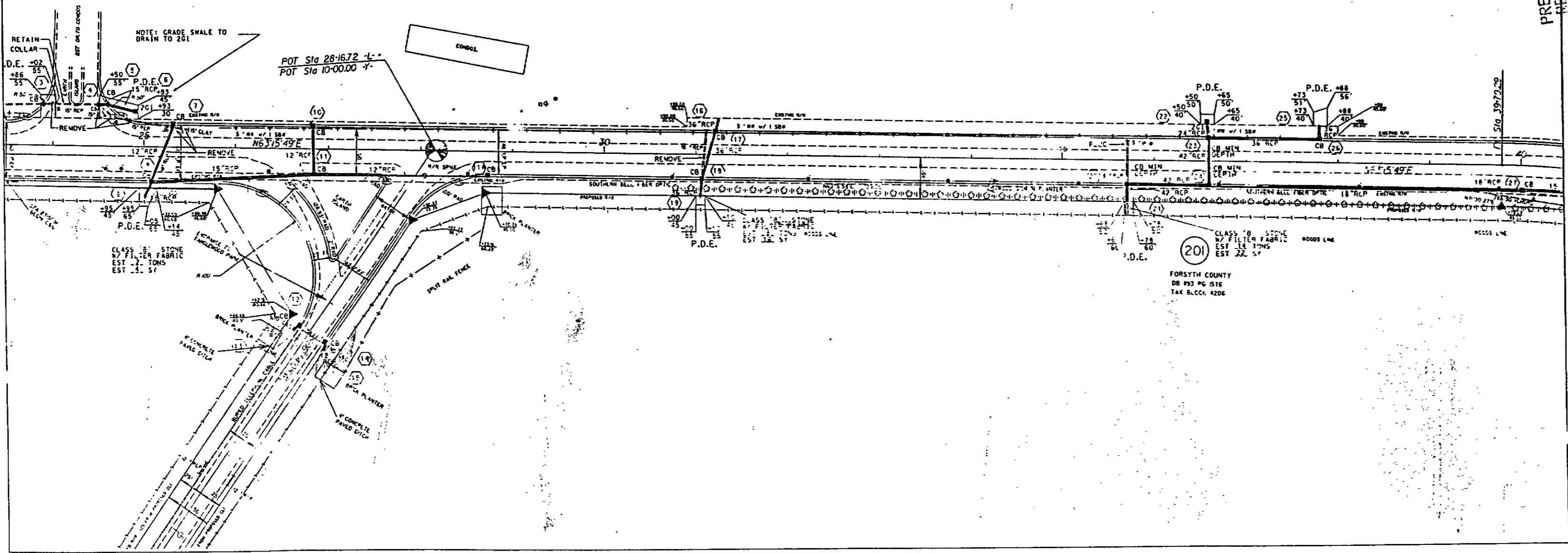
"STATE OF NORTH CAROLINA - COUNTY OF WAKE"

I, *Robert H. Blunt*, do hereby certify that this is a true and correct copy of the final plans for Project **98091812**, identified as **JUNE LE SPEAS DEPARTMENT OF TRANSPORTATION**, to the minutes on file in my office of the **REGISTER OF DEEDS** of the County of Wake, North Carolina, on the **10** day of **JUNE**, 19**94**. WHEREOF, I have hereunto set my hand and the seal of my office this **10** day of **JUNE**, 19**94**.

Custodian of Minutes  
 Ward of Transportation

\$5.00  
*Robert H. Blunt*

PROJ. REFERENCE NO.	SHEET NO.	TOTAL SHEETS
9.8091812	8	
STATE PROJ. NO.	F.A. PROJ. NO.	DESCRIPTION
9.8091812		CONSTRUCTION



PRESENTED FOR  
REGISTRATION  
AND RECORD

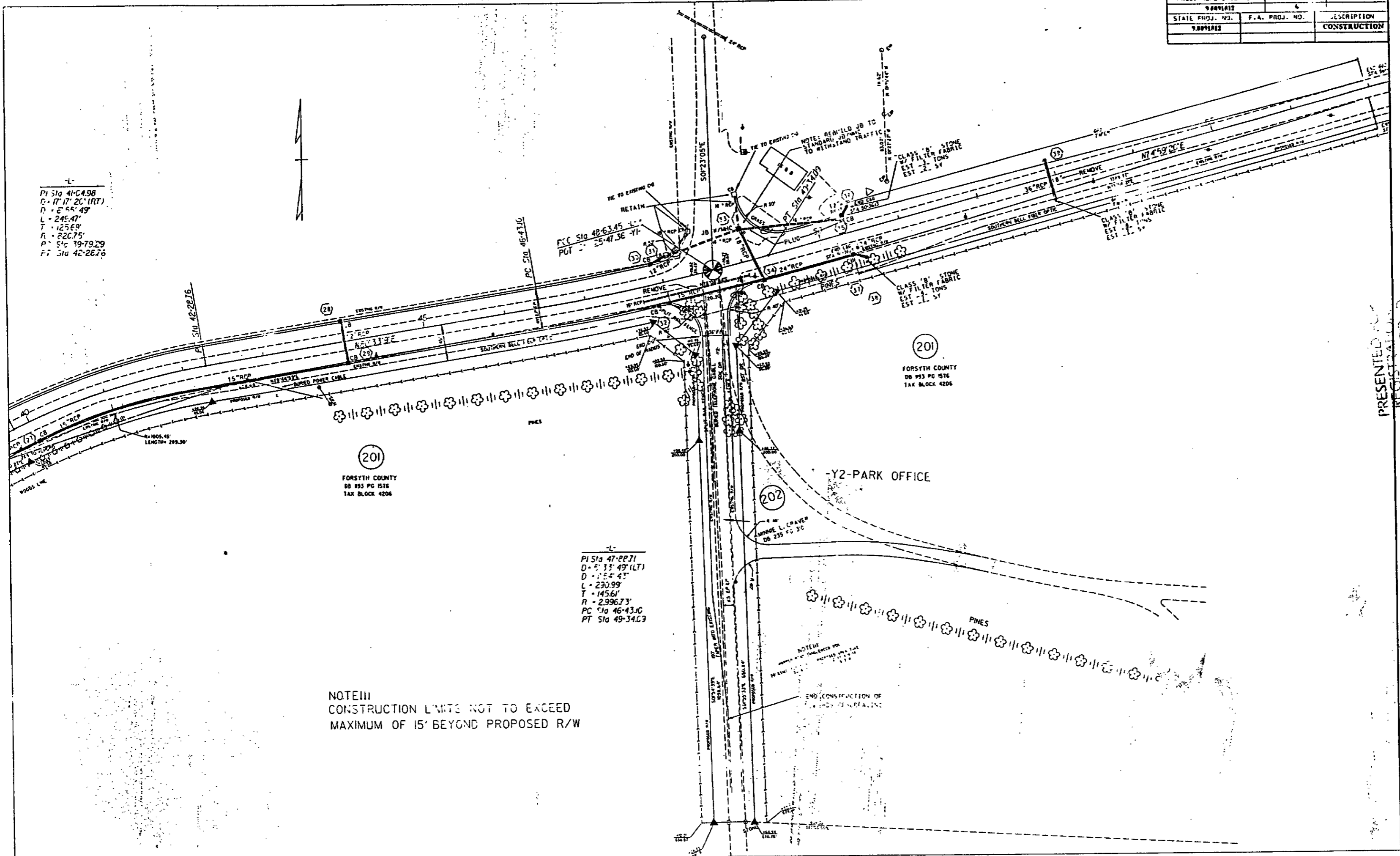
'94 JUN 21 A9:59

"STATE OF NORTH CAROLINA - COUNTY OF WAKE"  
I, *Caroline Wright*, do hereby certify that this is a true and correct copy  
of Plan Sheet *9.8091812* of the final plans for Project *9.8091812* identified as  
Addendum *10* to the minutes on file in my Office of the *JUNE* day of *JUNE*  
19 *94*, Board of Transportation meeting. IN TESTIMONY WHEREOF, I have hereunto  
my hand this the *13* day of *JUNE*, 19 *94*.

*Caroline Wright*  
\$15.00  
*Carly*

DEPARTMENT OF TRANSPORTATION  
REGISTERED PROFESSIONAL ENGINEER  
FORSYTH COUNTY Custodian of Minutes of Board of Transportation

PROJ. REFERENCE NO.	SHEET NO.	TOTAL SHEETS
9.8091812	4	
STATE PROJ. NO.	F.A. PROJ. NO.	DESCRIPTION
9.8091812		CONSTRUCTION



-L-  
 PI Sta 41+44.98  
 D = 17' 20" (RT)  
 L = 6' 55" 49"  
 T = 245.47'  
 R = 125.69'  
 P = 820.75'  
 PT Sta 42+28.76

PCC Sta 48+63.45 -L-  
 PVI = 25+47.36 -71-

-L-  
 PI Sta 47+88.71  
 D = 5' 33' 49" (LT)  
 L = 1' 54' 43"  
 T = 230.99'  
 R = 145.61'  
 P = 2,996.73'  
 PC Sta 46+43.10  
 PT Sta 49+34.03

NOTE III  
 CONSTRUCTION LIMITS NOT TO EXCEED  
 MAXIMUM OF 15' BEYOND PROPOSED R/W

PRESENTED FOR  
 REGISTRATION  
 AND RECORD

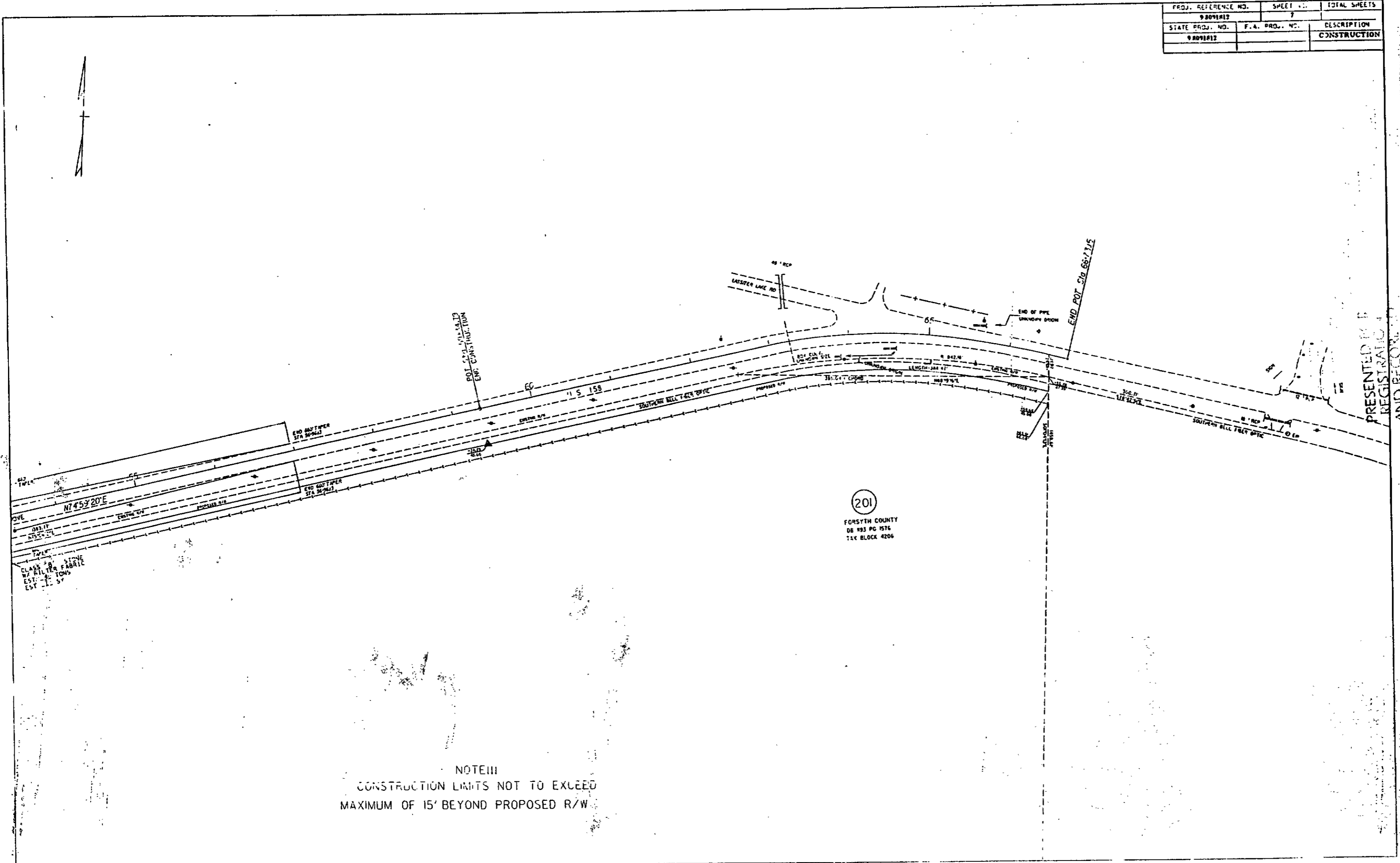
STATE OF NORTH CAROLINA - COUNTY OF WAKE  
 I, Caroline Wang, do hereby certify that this is a true and correct copy of the final plans for Project 9.8091812 identified as E. SPEAS Addendum 18 to the minutes on file in my office of the day of JUNE 1994, Board of Transportation meeting. IN TESTIMONY WHEREOF, I have hereunto set my hand and the seal of my office this 13 day of JUNE, 1994.

DEPARTMENT OF TRANSPORTATION  
 REGISTERED PROFESSIONAL ENGINEER  
 E. SPEAS  
 REGISTERED PROFESSIONAL ENGINEER  
 FORSYTH COUNTY, N.C. Custodian of Minutes of Board of Transportation

\$5.00  
 10/1/94

536

PROJ. REFERENCE NO.	SHEET NO.	TOTAL SHEETS
9809182	7	
STATE PROJ. NO.	F.A. PROJ. NO.	DESCRIPTION
9809182		CONSTRUCTION



NOTE III  
 CONSTRUCTION LIMITS NOT TO EXCEED  
 MAXIMUM OF 15' BEYOND PROPOSED R/W

201  
 FORSYTH COUNTY  
 DE 193 PC 1576  
 TAX BLOCK 4206

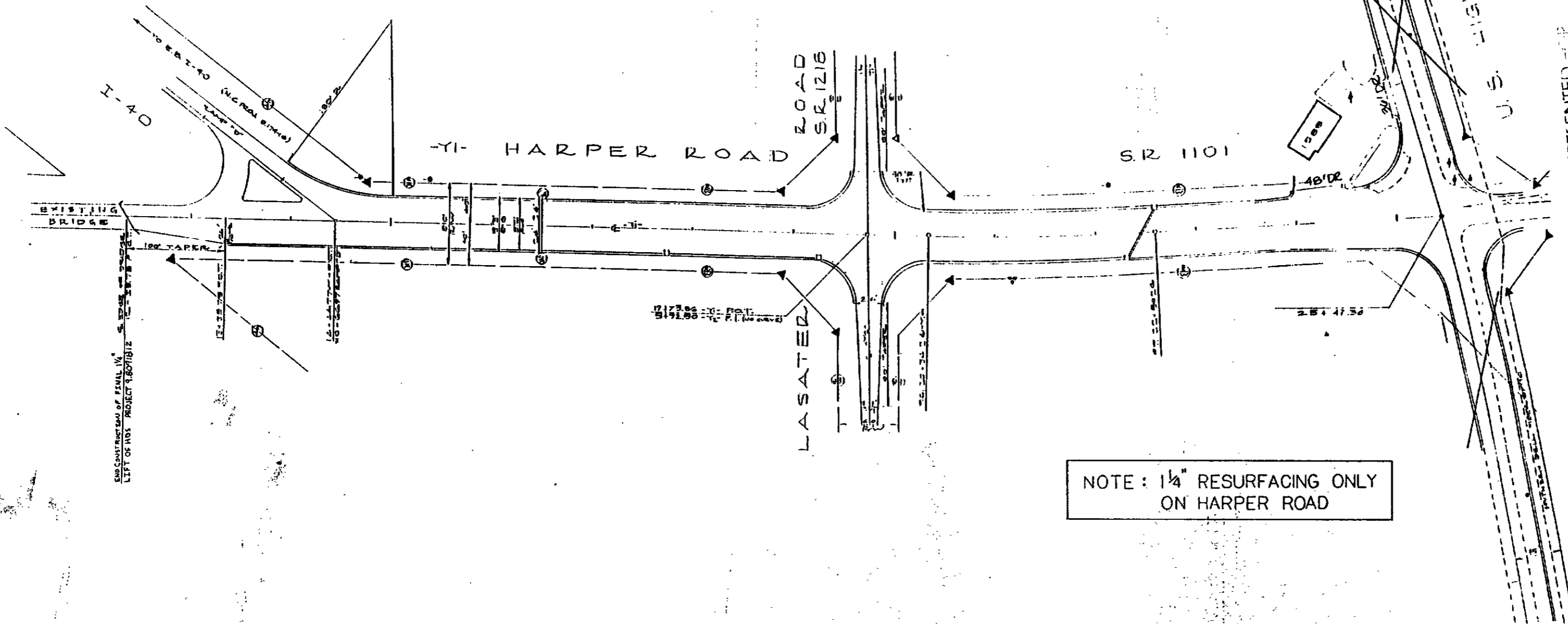
PRESENTED TO THE  
 REGISTERING  
 AND RECORDING

"STATE OF NORTH CAROLINA - COUNTY OF WAKE"  
 I, Richard Whitt, do hereby certify that this is a true and correct copy  
 of Plan Sheet 9809182 of the final plans for Project 9809182, identified as E. SPEAS  
 Addendum 10 to the minutes on file in my office of the 5 day of JUNE  
 19 94, Board of Transportation meeting. IN TESTIMONY WHEREOF, I have hereunto  
 my hand this the 13 day of JUNE, 1994.

DEPARTMENT OF TRANSPORTATION  
 REGISTERED PROFESSIONAL ENGINEER  
 E. SPEAS  
 FORSYTH CO. N.C.

\$500  
 Kathy

PROJ. REFERENCE NO.	SHEET NO.	TOTAL SHEETS
98091812	8	
STATE PROJ. NO.	F.A. PROJ. NO.	DESCRIPTION



NOTE: 1/4" RESURFACING ONLY ON HARPER ROAD

PRESENTED FOR  
REGISTRATION  
AND RECORD

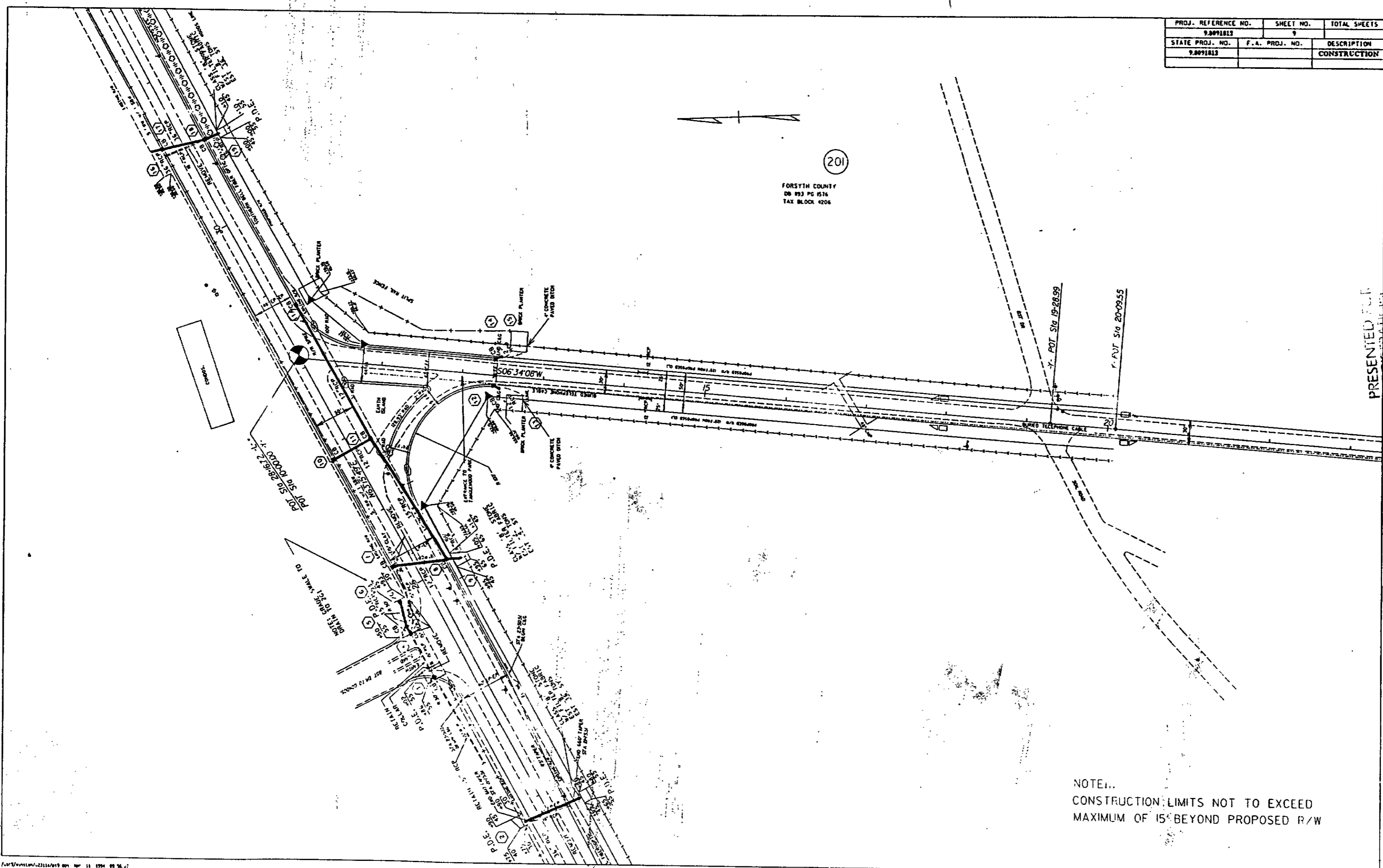
"STATE OF NORTH CAROLINA - COUNTY OF WAKE"  
I, Pauline Whitt, do hereby certify that this is a true and correct copy  
of Plan Sheet 98091812 the final plans for Project 98091812 identifying ASPEAS  
Addendum 10 to the minutes on file in my office of the 33 day of JUNE  
19 94, Board of Transportation meeting. IN TESTIMONY WHEREOF, I have hereunto set my hand and  
my hand this the 1 of JUNE, 19 94.

DEPARTMENT OF TRANSPORTATION  
Custodian of Minutes of Board of Transportation

#5.00  
Kathy Gowan

538

PROJ. REFERENCE NO.	SHEET NO.	TOTAL SHEETS
9.0091813	9	
STATE PROJ. NO.	F.A. PROJ. NO.	DESCRIPTION
9.0091813		CONSTRUCTION



(201)  
 FORSYTH COUNTY  
 DB 993 PG 4576  
 TAX BLOCK 4206

NOTE...  
 CONSTRUCTION LIMITS NOT TO EXCEED  
 MAXIMUM OF 15' BEYOND PROPOSED R/W

PRESENTED FOR  
 REGISTRATION  
 AND RECORDED

'94 JUN 21 A9:59

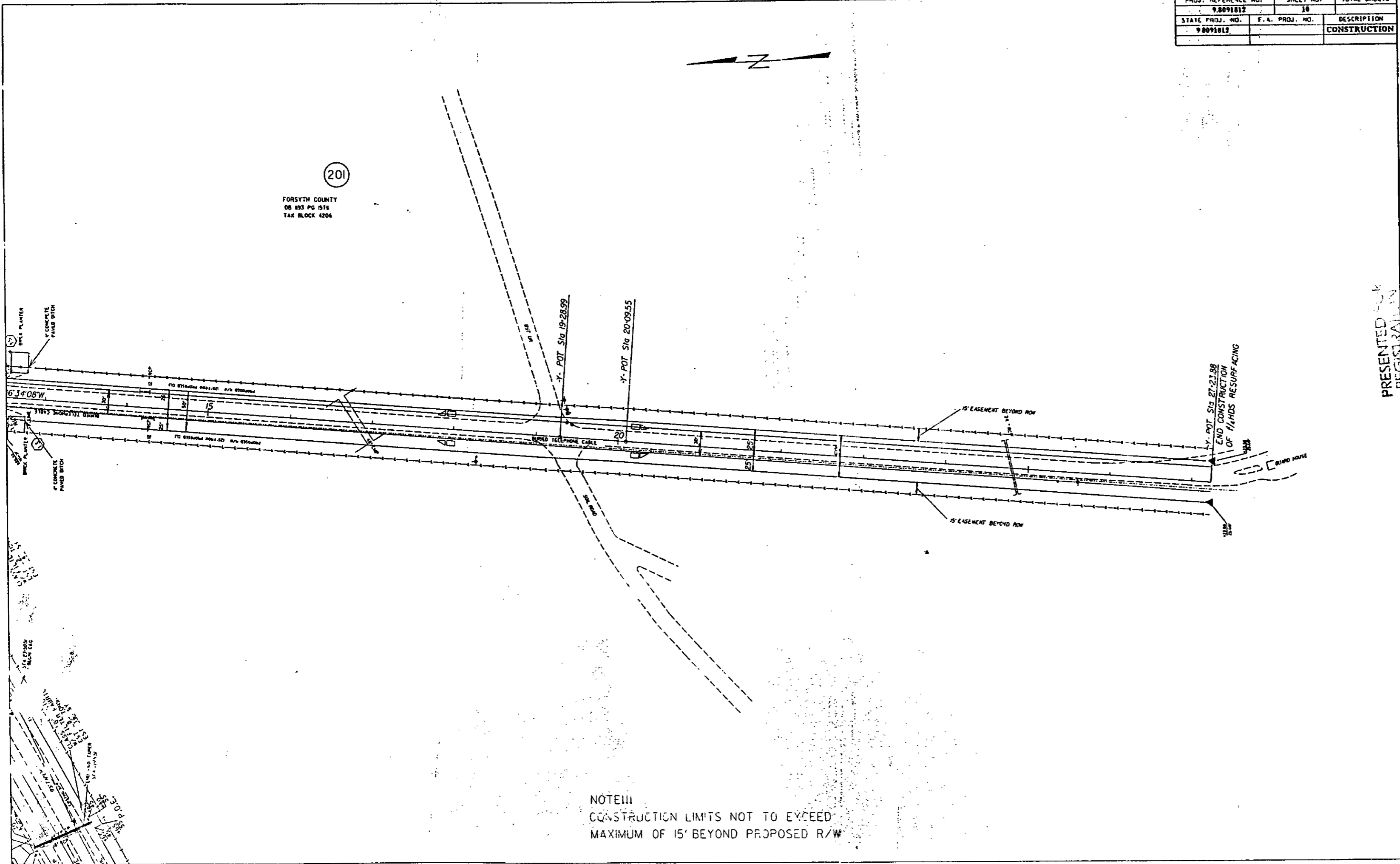
"STATE OF NORTH CAROLINA - COUNTY OF WAKE"  
 I, *Janet W. ...*, do hereby certify that this is a true and correct copy  
 of Plan Sheet *9* of the final plans for Project *98091813*, identified as *E. SPEAS*  
 Addendum *10* to the minutes on file in my office of the day of *JUNE* 19 *94*,  
 Board of Transportation meeting. IN TESTIMONY WHEREOF, I have hereunto  
 my hand this the *13* day of *JUNE*, 19 *94*.  
 \$5.00  
*Kathy Dorman*  
 CLERK  
 DEPARTMENT OF TRANSPORTATION  
 REGISTERED PROFESSIONAL ENGINEER  
 REGISTERED PROFESSIONAL SURVEYOR  
 REGISTERED PROFESSIONAL LAND SURVEYOR  
 REGISTERED PROFESSIONAL CIVIL ENGINEER  
 REGISTERED PROFESSIONAL ELECTRICAL ENGINEER  
 REGISTERED PROFESSIONAL MECHANICAL ENGINEER  
 REGISTERED PROFESSIONAL CHEMICAL ENGINEER  
 REGISTERED PROFESSIONAL INDUSTRIAL ENGINEER  
 REGISTERED PROFESSIONAL AERONAUTICAL ENGINEER  
 REGISTERED PROFESSIONAL METEOROLOGICAL ENGINEER  
 REGISTERED PROFESSIONAL AGRICULTURAL ENGINEER  
 REGISTERED PROFESSIONAL MARINE ENGINEER  
 REGISTERED PROFESSIONAL FISH AND WILDLIFE ENGINEER  
 REGISTERED PROFESSIONAL ENVIRONMENTAL ENGINEER  
 REGISTERED PROFESSIONAL ENVIRONMENTAL SCIENTIST  
 REGISTERED PROFESSIONAL ENVIRONMENTAL HEALTH AND SAFETY ENGINEER  
 REGISTERED PROFESSIONAL ENVIRONMENTAL PLANNING ENGINEER  
 REGISTERED PROFESSIONAL ENVIRONMENTAL POLICY ENGINEER  
 REGISTERED PROFESSIONAL ENVIRONMENTAL QUALITY ENGINEER  
 REGISTERED PROFESSIONAL ENVIRONMENTAL RECONSTRUCTION ENGINEER  
 REGISTERED PROFESSIONAL ENVIRONMENTAL RESTORATION ENGINEER  
 REGISTERED PROFESSIONAL ENVIRONMENTAL SCIENCE ENGINEER  
 REGISTERED PROFESSIONAL ENVIRONMENTAL TECHNOLOGY ENGINEER  
 REGISTERED PROFESSIONAL ENVIRONMENTAL TRAINING ENGINEER  
 REGISTERED PROFESSIONAL ENVIRONMENTAL EVALUATION ENGINEER  
 REGISTERED PROFESSIONAL ENVIRONMENTAL MONITORING ENGINEER  
 REGISTERED PROFESSIONAL ENVIRONMENTAL ASSESSMENT ENGINEER  
 REGISTERED PROFESSIONAL ENVIRONMENTAL IMPACT ENGINEER  
 REGISTERED PROFESSIONAL ENVIRONMENTAL RISK ENGINEER  
 REGISTERED PROFESSIONAL ENVIRONMENTAL HAZARD ENGINEER  
 REGISTERED PROFESSIONAL ENVIRONMENTAL POLICY ANALYSIS ENGINEER  
 REGISTERED PROFESSIONAL ENVIRONMENTAL POLICY DEVELOPMENT ENGINEER  
 REGISTERED PROFESSIONAL ENVIRONMENTAL POLICY IMPLEMENTATION ENGINEER  
 REGISTERED PROFESSIONAL ENVIRONMENTAL POLICY EVALUATION ENGINEER  
 REGISTERED PROFESSIONAL ENVIRONMENTAL POLICY MONITORING ENGINEER  
 REGISTERED PROFESSIONAL ENVIRONMENTAL POLICY REVISION ENGINEER  
 REGISTERED PROFESSIONAL ENVIRONMENTAL POLICY SUPPORT ENGINEER  
 REGISTERED PROFESSIONAL ENVIRONMENTAL POLICY TRAINING ENGINEER  
 REGISTERED PROFESSIONAL ENVIRONMENTAL POLICY ANALYSIS AND EVALUATION ENGINEER  
 REGISTERED PROFESSIONAL ENVIRONMENTAL POLICY DEVELOPMENT AND IMPLEMENTATION ENGINEER  
 REGISTERED PROFESSIONAL ENVIRONMENTAL POLICY MONITORING AND EVALUATION ENGINEER  
 REGISTERED PROFESSIONAL ENVIRONMENTAL POLICY REVISION AND SUPPORT ENGINEER  
 REGISTERED PROFESSIONAL ENVIRONMENTAL POLICY TRAINING AND EVALUATION ENGINEER  
 REGISTERED PROFESSIONAL ENVIRONMENTAL POLICY ANALYSIS, DEVELOPMENT, IMPLEMENTATION, MONITORING, EVALUATION, REVISION, AND SUPPORT ENGINEER

539

PROJ. REFERENCE NO.	SHEET NO.	TOTAL SHEETS
9.8091812	10	
STATE PROJ. NO.	F.A. PROJ. NO.	DESCRIPTION
9.8091812		CONSTRUCTION

201

FORSYTH COUNTY  
06 893 PG 0516  
TAX BLOCK 4206



NOTE III  
CONSTRUCTION LIMITS NOT TO EXCEED  
MAXIMUM OF 15' BEYOND PROPOSED R/W

PRESENTED FOR  
REGISTRATION  
AND RECEIVED

'94 JUN 21 A9:39

"STATE OF NORTH CAROLINA - COUNTY OF WAKE"  
 I, Caroline Whit, do hereby certify that this is a true and correct copy  
 of Plan Sheet 10 of the final plans for Project 9.8091812 identified as SPEAS  
 Addendum 10 to the minutes on file in my office of the 3 day of JUNE  
 19 94, Board of Transportation meeting. IN TESTIMONY WHEREOF, I have hereunto  
 my hand this the 12 day of JUNE, 19 94.

DEPARTMENT OF TRANSPORTATION  
[Signature]  
 CUSTODIAN OF MINUTES

FORSYTH CO. N.C.  
 \$5.00  
[Signature]