



STATE OF NORTH CAROLINA DIVISION OF HIGHWAYS

CONVENTIONAL SYMBOLS

\*S.U.E = SUBSURFACE UTILITY ENGINEER

ROADS & RELATED ITEMS

Table listing symbols for roads and related items: Edge of Pavement, Curb, Prop. Slope Stakes Cut, Prop. Slope Stakes Fill, Prop. Woven Wire Fence, Prop. Chain Link Fence, Prop. Barbed Wire Fence, Prop. Wheelchair Ramp, Curb Cut for Future Wheelchair Ramp, Exist. Guardrail, Prop. Guardrail, Equality Symbol, Pavement Removal.

RIGHT OF WAY

Table listing symbols for right of way: Baseline Control Point, Existing Right of Way Marker, Exist. Right of Way Line w/Marker, Prop. Right of Way Line with Proposed RW Marker (Iron Pin & Cap), Prop. Right of Way Line with Proposed (Concrete or Granite) RW Marker, Exist. Control of Access Line, Prop. Control of Access Line, Exist. Easement Line, Prop. Temp. Construction Easement Line, Prop. Temp. Drainage Easement Line, Prop. Perm. Drainage Easement Line.

HYDROLOGY

Table listing symbols for hydrology: Stream or Body of Water, River Basin Buffer, Flow Arrow, Disappearing Stream, Spring, Swamp Marsh, Shoreline, Falls, Rapids, Prop Lateral, Tail, Head Ditches.

STRUCTURES

Table listing symbols for structures: MAJOR Bridge, Tunnel, or Box Culvert, Bridge Wing Wall, Head Wall and End Wall.

Table listing symbols for minor utilities: MINOR Head & End Wall, Pipe Culvert, Footbridge, Drainage Boxes, Paved Ditch Gutter.

UTILITIES

Table listing symbols for utilities: Exist. Pole, Exist. Power Pole, Prop. Power Pole, Exist. Telephone Pole, Prop. Telephone Pole, Exist. Joint Use Pole, Prop. Joint Use Pole, Telephone Pedestal, UG Telephone Cable Hand Hold, Cable TV Pedestal, UG TV Cable Hand Hold, UG Power Cable Hand Hold, Hydrant, Satellite Dish, Exist. Water Valve, Sewer Clean Out, Power Manhole, Telephone Booth, Cellular Telephone Tower, Water Manhole, Light Pole, H-Frame Pole, Power Line Tower, Pole with Base, Gas Valve, Gas Meter, Telephone Manhole, Power Transformer, Sanitary Sewer Manhole, Storm Sewer Manhole, Tank; Water, Gas, Oil, Water Tank With Legs, Traffic Signal Junction Box, Fiber Optic Splice Box, Television or Radio Tower, Utility Power Line Connects to another, Signal Lines Cut Into the Cover.

STATE OF NORTH CAROLINA - COUNTY OF WARE. As Chairman of the Board of Transportation, I do hereby certify that this is a true and correct copy of the minutes of the Board of Transportation for Project 3198822. The said plan sheet having been approved and adopted by the Board of Transportation and identified as Addendum 3 to the minutes of the meeting on the 11th day of August 2005. J. Alan Dennis, Secretary to Board of Transportation.

Table listing symbols for utilities: Recorded Water Line, Designated Water Line (S.U.E.\*), Sanitary Sewer, Recorded Sanitary Sewer Force Main, Designated Sanitary Sewer Force Main(S.U.E.\*), Recorded Gas Line, Designated Gas Line (S.U.E.\*), Storm Sewer, Recorded Power Line, Designated Power Line (S.U.E.\*), Recorded Telephone Cable, Designated Telephone Cable (S.U.E.\*), Recorded UG Telephone Conduit, Designated UG Telephone Conduit (S.U.E.\*), Unknown Utility (S.U.E.\*), Recorded Television Cable, Designated Television Cable (S.U.E.\*), Recorded Fiber Optics Cable, Designated Fiber Optics Cable (S.U.E.\*), Exist. Water Meter, UG Test Hole (S.U.E.\*), Abandoned According to UG Record, End of Information.

BOUNDARIES & PROPERTIES

Table listing symbols for boundaries and properties: State Line, County Line, Township Line, City Line, Reservation Line, Property Line, Property Line Symbol, Exist. Iron Pin, Property Corner, Property Monument, Property Number, Parcel Number, Fence Line, Existing Wetland Boundaries, High Quality Wetland Boundary, Medium Quality Wetland Boundaries, Low Quality Wetland Boundaries, Proposed Wetland Boundaries, Existing Endangered Animal Boundaries, Existing Endangered Plant Boundaries.

BUILDINGS & OTHER CULTURE

Table listing symbols for buildings and other culture: Buildings, Foundations, Area Outline, Gate, Gas Pump Vent or UG Tank Cap, Church, School, Park, Cemetery, Dam, Sign, Well, Small Mine, Swimming Pool.

TOPOGRAPHY

Table listing symbols for topography: Loose Surface, Hard Surface, Change in Road Surface, Curb, Right of Way Symbol, Guard Post, Paved Walk, Bridge, Box Culvert or Tunnel, Ferry, Culvert, Footbridge, Trail, Footpath, Light House.

VEGETATION

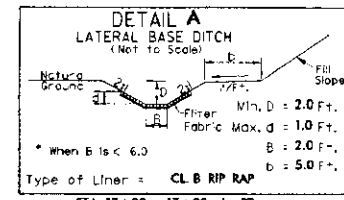
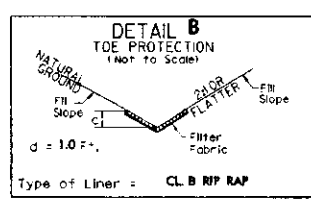
Table listing symbols for vegetation: Single Tree, Single Shrub, Hedge, Woods Line, Orchard, Vineyard.

RAILROADS

Table listing symbols for railroads: Standard Gauge, RR Signal Milepost, Switch.

95-AUG-2004 08:45 RD203021

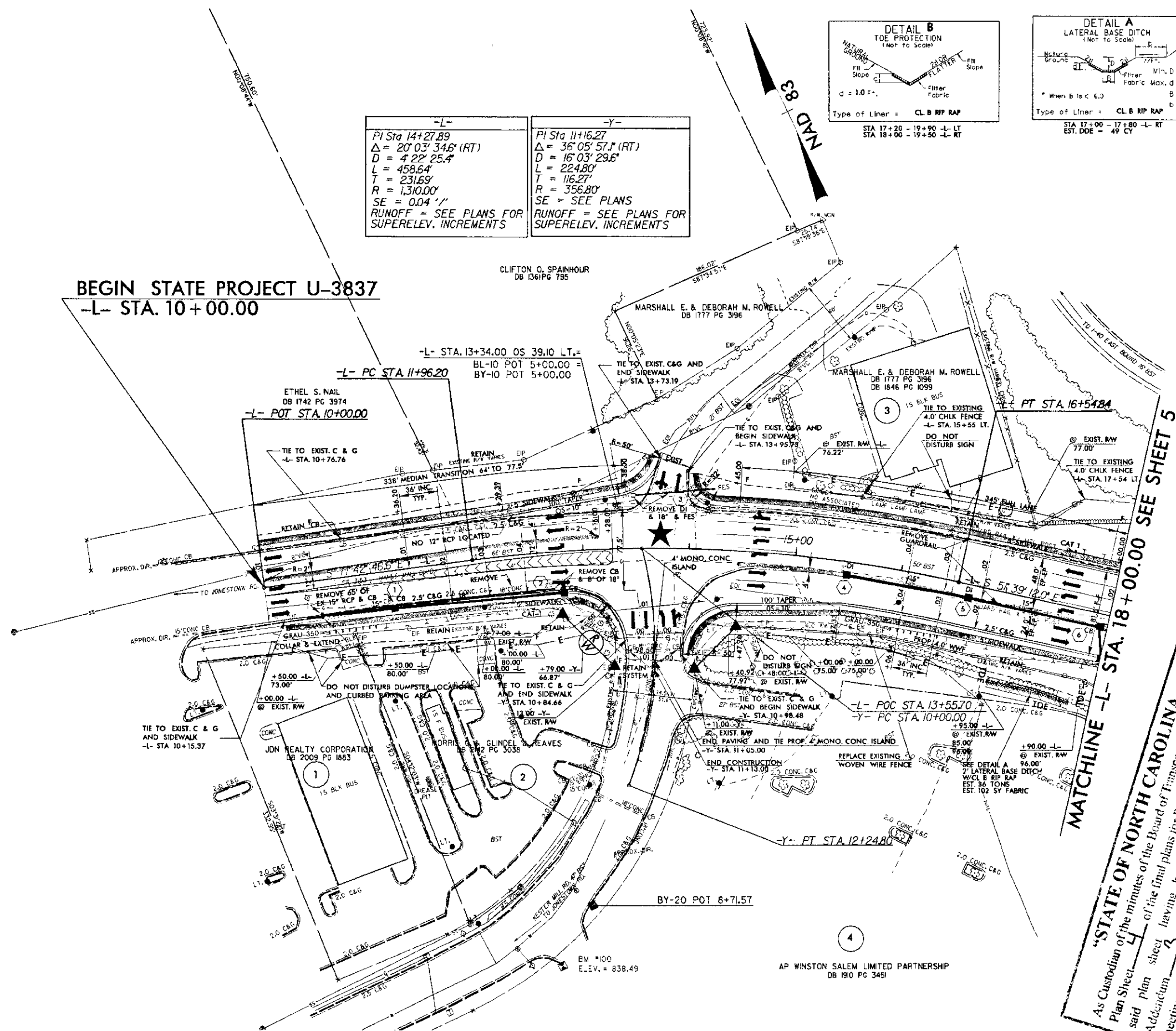
PROJECT REFERENCE NO. U-3837	SHEET NO. 4
RW SHEET NO.	
ROADWAY DESIGN ENGINEER	HYDRAULICS ENGINEER



-L-	-Y-
PI Sta 14+27.89	PI Sta 11+16.27
$\Delta = 20' 03" 34.6'$ (RT)	$\Delta = 36' 05" 57.1'$ (RT)
$D = 4' 22" 25.4'$	$D = 16' 03" 29.6'$
$L = 458.64'$	$L = 224.80'$
$T = 231.69'$	$T = 116.27'$
$R = 1,310.00'$	$R = 356.80'$
$SE = 0.04' / 1'$	$SE = \text{SEE PLANS}$
RUNOFF = SEE PLANS FOR SUPERELEV. INCREMENTS	RUNOFF = SEE PLANS FOR SUPERELEV. INCREMENTS

12872 27700	216 300	332 300	116 200	18132 30900
	1512 2100		4872 10400	
KESTER MILL RD. (SR 1126) 8384 72500		2004 ADT 2025		
		HANES MALL BLVD. (SR 3153)		

**BEGIN STATE PROJECT U-3837**  
-L- STA. 10+00.00



MATCHLINE -L- STA. 18+00.00 SEE SHEET 5

**"STATE OF NORTH CAROLINA - COUNTY OF WAKE"**  
 As Custodian of the minutes of the Board of Transportation, I do hereby certify that this is a true and correct copy of  
 Plan Sheet 4 of the final plans for Project 34988-22  
 Addition 3 having been approved and adopted by the Board of Transportation and identified as  
 meeting on file in my office on the 11 day of AUGUST 2005 at 4:45 PM in TESTIMONY WHEREOF, I have hereunto set my hand  
 this the 11 day of AUGUST 2005  
 Secretary to Wake County Transportation

DENOTES PAINTED ISLAND (SEE PAVEMENT MARKING PLANS)

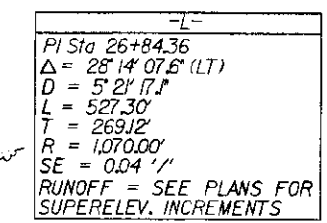
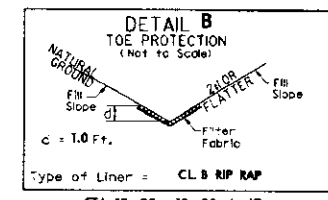
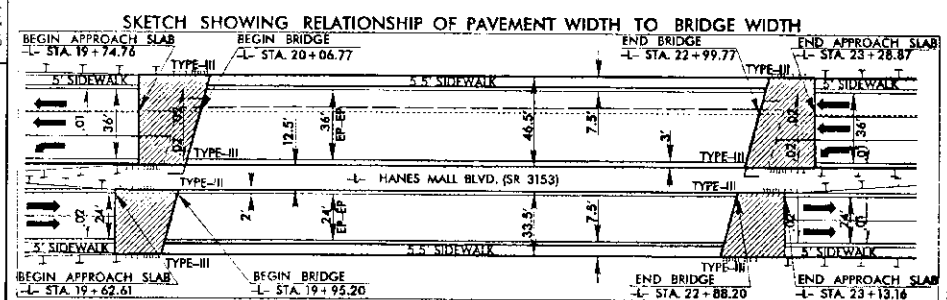
SIGNALIZED INTERSECTION

SEE SHEET 9 FOR -L- PROFILE  
SEE SHEET 12 FOR -Y- PROFILE

REVISIONS

6/2/05-05/15/05  
 R. J. Pro. No. 3837-04-01  
 D:\proj\3837-04-01

PROJECT REFERENCE NO. U-3837	SHEET NO. 5
ROADWAY DESIGN ENGINEER JAMES A. SPEER	HYDRAULICS ENGINEER MARK A. & CATHERINE E. ENGLISH
1/14/2005	1/14/2005



**“STATE OF NORTH CAROLINA ~ COUNTY OF WAKE”**

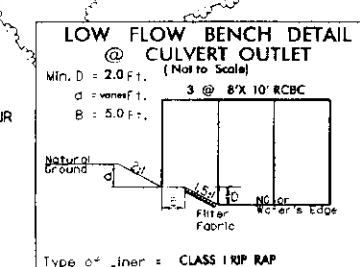
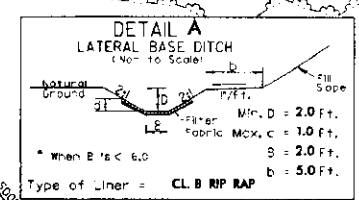
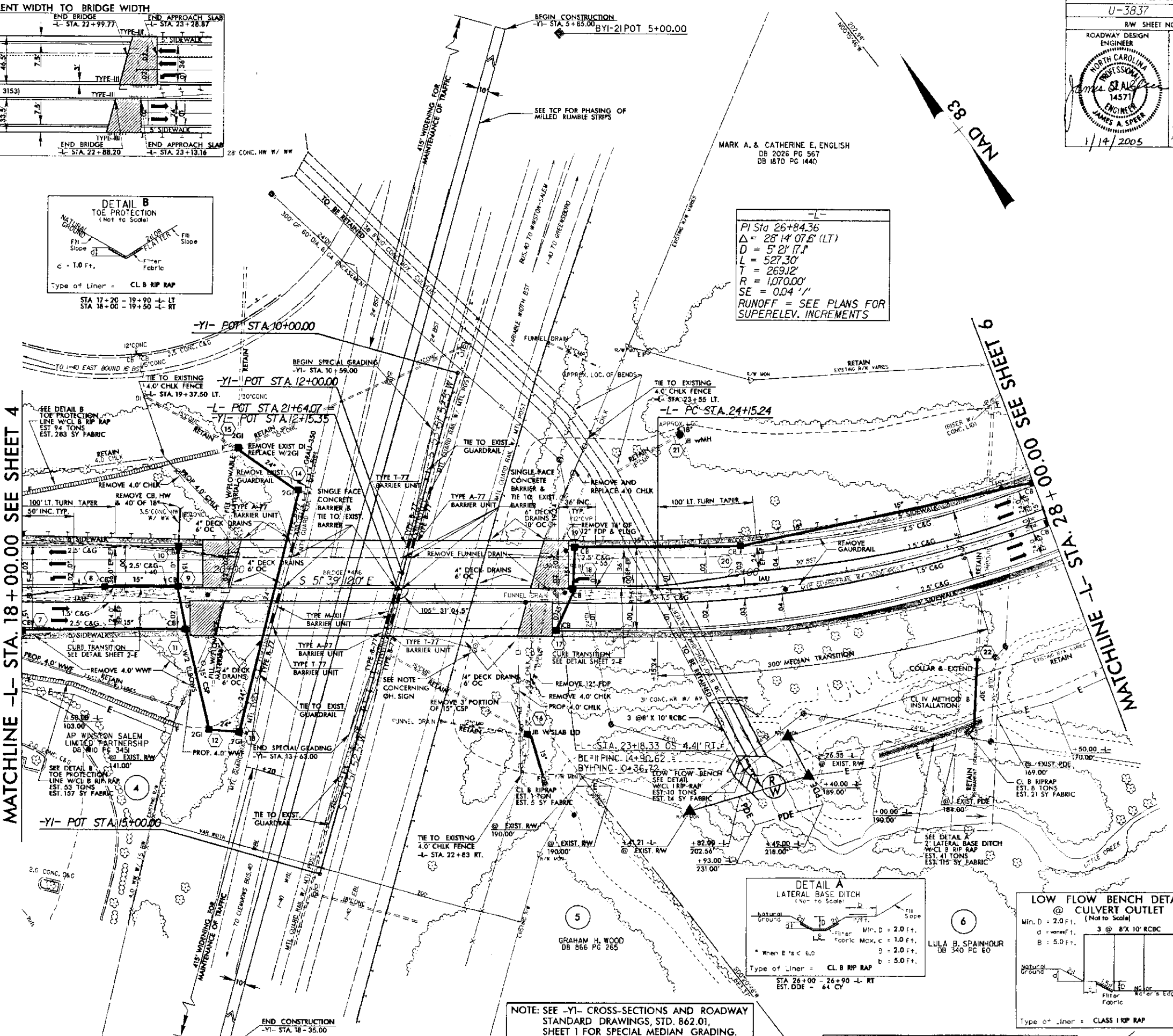
As Custodian of the minutes of the Board of Transportation, I do hereby certify that this is a true and correct copy of Plan Sheet 5 of the final plans for Project 34988-2-2.

said plan sheet having been approved and adopted by the Board of Transportation and identified as Addendum 3 to the minutes of the 4th day of August, 2005. Board of Transportation meeting on file in my office, IN TESTIMONY WHEREOF, I have hereunto set my hand this the 11 day of August, 2005.

*Imogene Reynolds*  
Secretary to Board of Transportation

MATCHLINE -L- STA. 18 + 00.00 SEE SHEET 4

MATCHLINE -L- STA. 28 + 00.00 SEE SHEET 9



NOTE: SEE -YI- CROSS-SECTIONS AND ROADWAY STANDARD DRAWINGS, STD. 862.01, SHEET 1 FOR SPECIAL MEDIAN GRADING.

NOTE: -YI- STA. 12+50 OVERHEAD SIGN TO BE REMOVED AND REPLACED. SEE SIGNING PLANS

SEE SHEETS 9 & 10 FOR -L- PROFILE  
SEE SHEETS S-1 THRU S-78 FOR STRUCTURE PLANS  
SEE SHEETS C-1 THRU C-6 FOR CULVERT PLANS

SEE SHEETS TCP-1 THRU TCP-20 FOR TRAFFIC CONTROL PLANS

REVISIONS

01-JAN-2005 14:38  
REVISED BY: JAS/ASH  
DRAWN BY: JAS/ASH

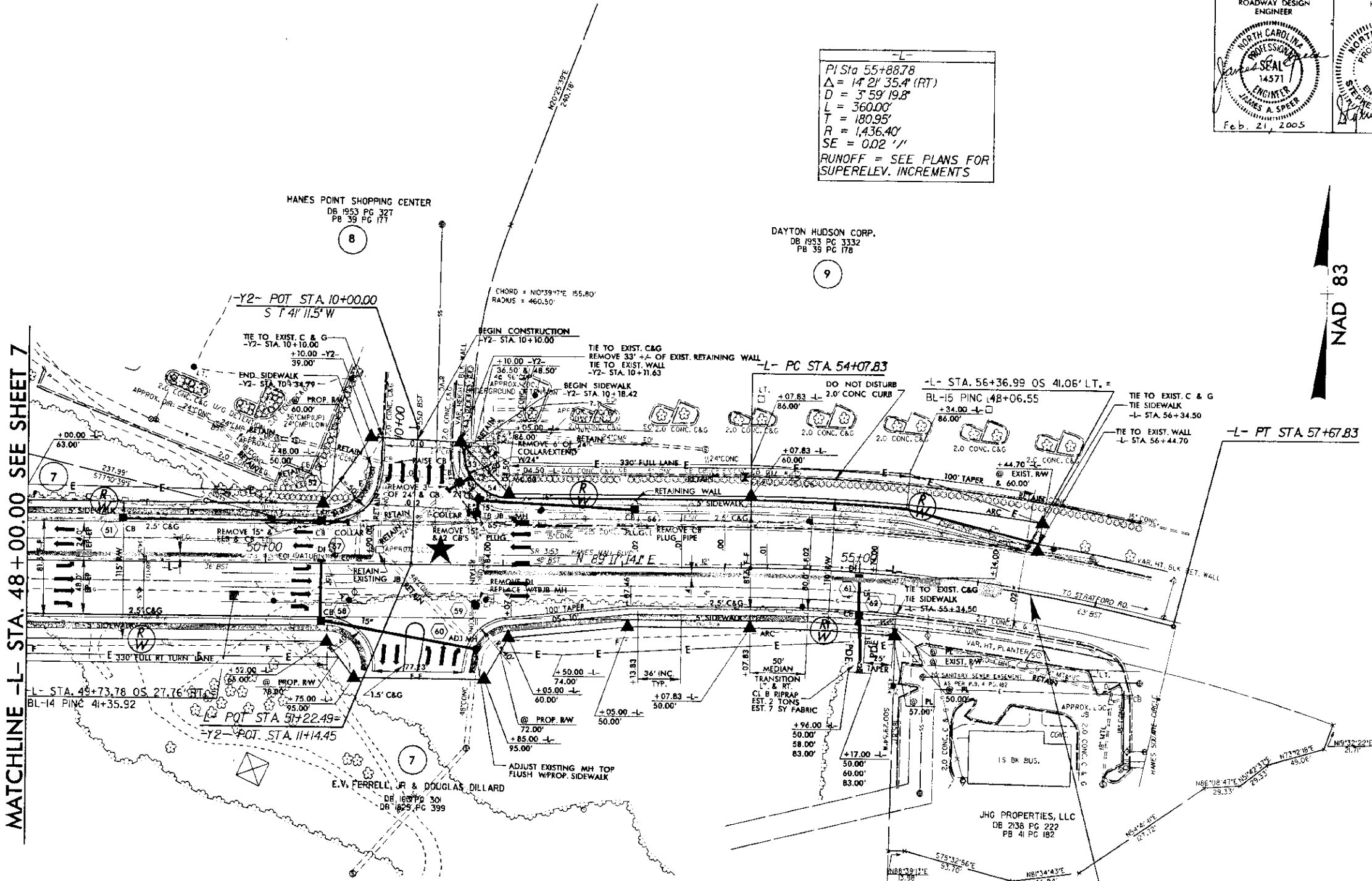






PROJECT REFERENCE NO. U-3837	SHEET NO. 8
RW SHEET NO.	
ROADWAY DESIGN ENGINEER JAMES & SPEER Professional Seal 14371 Feb. 21, 2005	HYDRAULICS ENGINEER Professional Seal 22100 2-22-05

-L-  
 PI Sta 55+88.78  
 $\Delta = 14' 21" 35.4" (RT)$   
 $D = 3' 59" 19.8"$   
 $L = 360.00'$   
 $T = 180.95'$   
 $R = 1,436.40'$   
 $SE = 0.02' /'$   
 RUNOFF = SEE PLANS FOR SUPERELEV. INCREMENTS



MATCHLINE -L- STA. 48 + 00.00 SEE SHEET 7

END STATE PROJECT U-3837  
 -L- STA. 56 + 45.00

**"STATE OF NORTH CAROLINA ~ COUNTY OF WAKE"**

As Custodian of the minutes of the Board of Transportation, I do hereby certify that this is a true and correct copy of Plan Sheet 8 of the final plans for Project 34989.2.2 said plan sheet having been approved and adopted by the Board of Transportation and identified as Addendum 3 to the minutes of the 4<sup>th</sup> day of Aug. 2005 Board of Transportation meeting on file in my office. IN TESTIMONY WHEREOF, I have hereunto set my hand this the 11 day of August 2005

*Thomas Dennis*  
 Secretary to Board of Transportation

★ SIGNALIZED INTERSECTION  
 SEE SHEET 11 FOR -L- PROFILE  
 SEE SHEET 12 FOR -Y2- PROFILE  
 SEE SHEETS W-1 THRU W-2 FOR WALL PLANS

REVISIONS

18-FEB-2005 13:42  
 J:\proj\34989.2.2\34989.2.2.dwg  
 JMS