

See Sheet 1-A For Index of Sheets
 See Sheet 1-B For Conventional Symbols
 See Sheet 1-C For Survey Control Sheet

STATE OF NORTH CAROLINA
 DIVISION OF HIGHWAYS

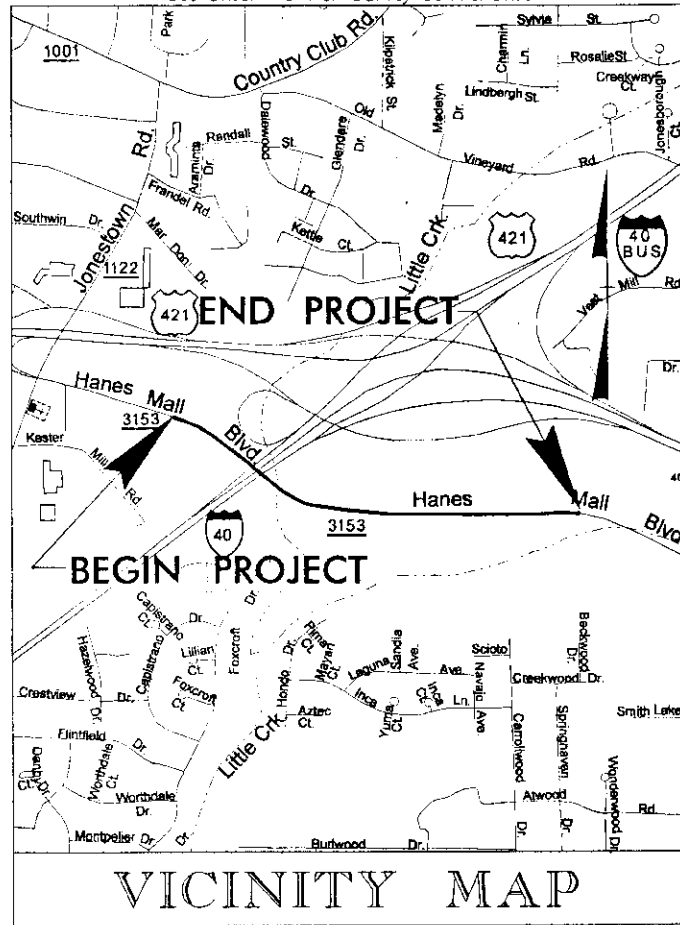
FORSYTH COUNTY

LOCATION: WINSTON-SALEM - BRIDGE NO. 436 OVER I-40 ON SR 3153
 (HANES MALL BLVD.) FROM WEST OF KESTER MILL ROAD
 TO WEST OF WESTGATE CENTER DRIVE

TYPE OF WORK: GRADING, DRAINAGE, PAVING, CURB AND
 GUTTER, GUARDRAIL, RETAINING WALL,
 STRUCTURE, AND CULVERT EXTENSION

PROJECT	34988.2.1
PRIMARY ROAD	SR-3153
CONNECTING ROADS	

STATE	STATE PROJECT REFERENCE NO.	SHEET NO.	TOTAL SHEETS
N.C.	U-3837	1	
STATE PROJ. NO.	F.A. PROJ. NO.	DESCRIPTION	
34988.1.1	STP-3153(1)	PE	
34988.2.1	STP-3153(1)	R/W, UTILITIES	
34988.3.2	STP-3153(2)	CONST.	



STA. 10+00.00 -L- BEGIN TIP PROJECT U-3837

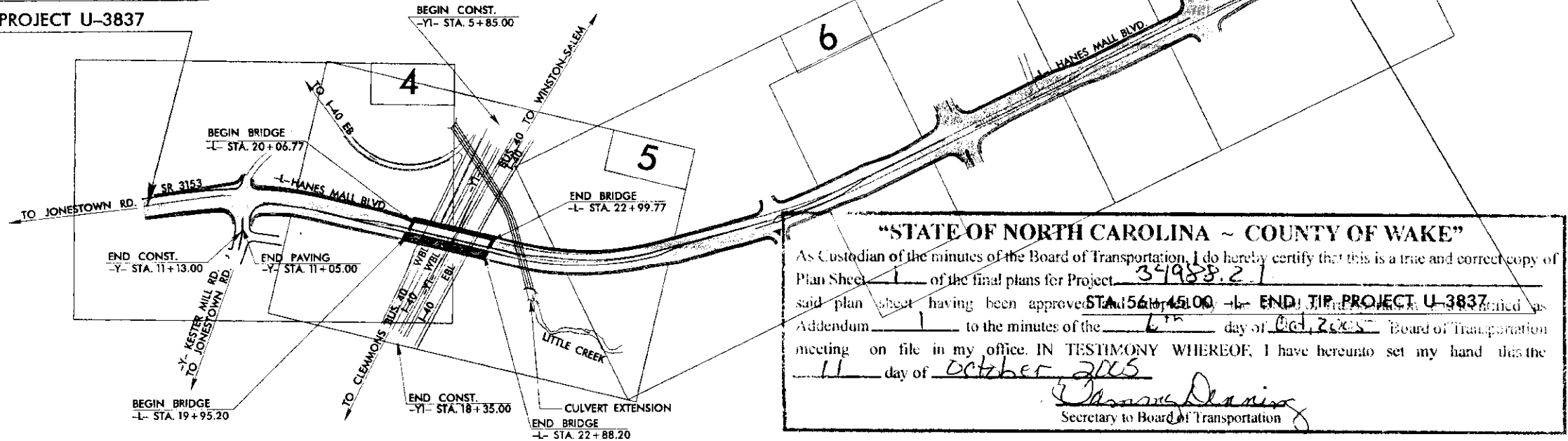
2005070499 0

FORSYTH CO, NC FEE \$51.00
 PRESENTED & RECORDED:
 10-25-2005 09:34 AM

DICKIE C WOOD
 REGISTER OF DEEDS
 By: PATSY RUTH DAVIS DPTY

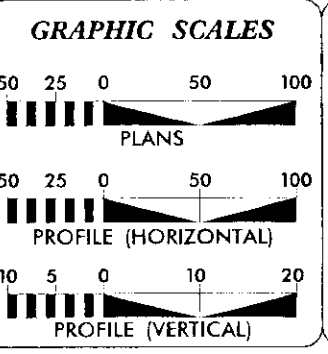
BK:H 2

PG:23-29



"STATE OF NORTH CAROLINA ~ COUNTY OF WAKE"
 As Custodian of the minutes of the Board of Transportation, I do hereby certify that this is a true and correct copy of
 Plan Sheet 1 of the final plans for Project 34988.2.1
 said plan sheet having been approved STA. 56+45.00 -L- END TIP PROJECT U-3837
 Addendum 1 to the minutes of the 6th day of Oct 2005 Board of Transportation
 meeting on file in my office. IN TESTIMONY WHEREOF, I have hereunto set my hand this the
11 day of October 2005
Chas. D. Davis
 Secretary to Board of Transportation

CONTRACT: C201505 TIP PROJECT: U-3837



DESIGN DATA

ADT 2005 =	18740
ADT 2025 =	30900
DHV =	11 %
D =	60 %
T =	10 % *
V =	50 MPH
* TTST 4 %	DUAL 6 %

PROJECT LENGTH

LENGTH ROADWAY TIP PROJECT U-3837 =	0.825 mi.
LENGTH STRUCTURE TIP PROJECT U-3837 =	0.055 mi.
TOTAL LENGTH OF TIP PROJECT U-3837 =	0.880 mi.

Prepared in the Office of:
DIVISION OF HIGHWAYS
 1000 Birch Ridge Dr., NC, 27610

2002 STANDARD SPECIFICATIONS

RIGHT OF WAY DATE: JAMES A. SPEER, PE
 OCTOBER 23, 2003
 PROJECT ENGINEER

LETTING DATE: DANNY GARDNER
 SEPTEMBER 20, 2005
 PROJECT DESIGN ENGINEER

HYDRAULICS ENGINEER
 NORTH CAROLINA PROFESSIONAL SEAL 22100
 SIGNATURE: *[Signature]* P.E.
ROADWAY DESIGN ENGINEER
 NORTH CAROLINA PROFESSIONAL SEAL 14571
 SIGNATURE: *[Signature]* P.E.

DIVISION OF HIGHWAYS
 STATE OF NORTH CAROLINA

out millan P.E.
 STATE DESIGN ENGINEER

DEPARTMENT OF TRANSPORTATION
 FEDERAL HIGHWAY ADMINISTRATION

APPROVED
 DIVISION ADMINISTRATOR DATE

STATE OF NORTH CAROLINA DIVISION OF HIGHWAYS

CONVENTIONAL SYMBOLS

*S.U.E = SUBSURFACE UTILITY ENGINEER

ROADS & RELATED ITEMS

Table listing symbols for roads and related items: Edge of Pavement, Curb, Prop. Slope Stakes Cut, Prop. Slope Stakes Fill, Prop. Woven Wire Fence, Prop. Chain Link Fence, Prop. Barbed Wire Fence, Prop. Wheelchair Ramp, Curb Cut for Future Wheelchair Ramp, Exist. Guardrail, Prop. Guardrail, Equality Symbol, Pavement Removal.

RIGHT OF WAY

Table listing symbols for right of way: Baseline Control Point, Existing Right of Way Marker, Exist. Right of Way Line w/Marker, Prop. Right of Way Line with Proposed RW Marker (Iron Pin & Cap), Prop. Right of Way Line with Proposed (Concrete or Granite) RW Marker, Exist. Control of Access Line, Prop. Control of Access Line, Exist. Easement Line, Prop. Temp. Construction Easement Line, Prop. Temp. Drainage Easement Line, Prop. Perm. Drainage Easement Line.

HYDROLOGY

Table listing symbols for hydrology: Stream or Body of Water, River Basin Buffer, Flow Arrow, Disappearing Stream, Spring, Swamp Marsh, Shoreline, Falls, Rapids, Prop Lateral, Tail, Head Ditches.

STRUCTURES

Table listing symbols for structures: MAJOR Bridge, Tunnel, or Box Culvert, Bridge Wing Wall, Head Wall and End Wall.

Table listing symbols for minor utilities: MINOR Head & End Wall, Pipe Culvert, Footbridge, Drainage Boxes, Paved Ditch Gutter.

UTILITIES

Table listing symbols for utilities: Exist. Pole, Exist. Power Pole, Prop. Power Pole, Exist. Telephone Pole, Prop. Telephone Pole, Exist. Joint Use Pole, Prop. Joint Use Pole, Telephone Pedestal, U/G Telephone Cable Hand Hold, Cable TV Pedestal, U/G TV Cable Hand Hold, U/G Power Cable Hand Hold, Hydrant, Satellite Dish, Exist. Water Valve, Sewer Clean Out, Power Manhole, Telephone Booth, Cellular Telephone Tower, Water Manhole, Light Pole, H-Frame Pole, Power Line Tower, Pole with Base, Gas Valve, Gas Meter, Telephone Manhole, Power Transformer, Sanitary Sewer Manhole, Storm Sewer Manhole, Tank; Water, Gas, Oil, Water Tank With Legs, Traffic Signal Junction Box, Fiber Optic Splice Box, Television or Radio Tower, Utility Power Line Connects to Traffic Signal Lines Cut Into the Pavement.

STATE OF NORTH CAROLINA - COUNTY OF WAKE. As Custodian of the minutes of the Board of Transportation, I do hereby certify that this is a true and correct copy of Plan Sheet 1-B of the final plans for Project 34988-2-1 said plan sheet having been approved and adopted by the Board of Transportation and identified as an Addendum to the minutes of the meeting on file in my office. IN TESTIMONY WHEREOF, I have hereunto set my hand this 11 day of October 2005. [Signature] Secretary to Board of Transportation.

Table listing symbols for utilities: Recorded Water Line, Designated Water Line (S.U.E.*), Sanitary Sewer, Recorded Sanitary Sewer Force Main, Designated Sanitary Sewer Force Main(S.U.E.*), Recorded Gas Line, Designated Gas Line (S.U.E.*), Storm Sewer, Recorded Power Line, Designated Power Line (S.U.E.*), Recorded Telephone Cable, Designated Telephone Cable (S.U.E.*), Recorded U/G Telephone Conduit, Designated U/G Telephone Conduit (S.U.E.*), Unknown Utility (S.U.E.*), Recorded Television Cable, Designated Television Cable (S.U.E.*), Recorded Fiber Optics Cable, Designated Fiber Optics Cable (S.U.E.*), Exist. Water Meter, U/G Test Hole (S.U.E.*), Abandoned According to U/G Record, End of Information.

BOUNDARIES & PROPERTIES

Table listing symbols for boundaries and properties: State Line, County Line, Township Line, City Line, Reservation Line, Property Line, Property Line Symbol, Exist. Iron Pin, Property Corner, Property Monument, Property Number, Parcel Number, Fence Line, Existing Wetland Boundaries, High Quality Wetland Boundary, Medium Quality Wetland Boundaries, Low Quality Wetland Boundaries, Proposed Wetland Boundaries, Existing Endangered Animal Boundaries, Existing Endangered Plant Boundaries.

BUILDINGS & OTHER CULTURE

Table listing symbols for buildings and other culture: Buildings, Foundations, Area Outline, Gate, Gas Pump Vent or U/G Tank Cap, Church, School, Park, Cemetery, Dam, Sign, Well, Small Mine, Swimming Pool.

TOPOGRAPHY

Table listing symbols for topography: Loose Surface, Hard Surface, Change in Road Surface, Curb, Right of Way Symbol, Guard Post, Paved Walk, Bridge, Box Culvert or Tunnel, Ferry, Culvert, Footbridge, Trail, Footpath, Light House.

VEGETATION

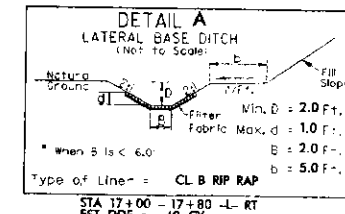
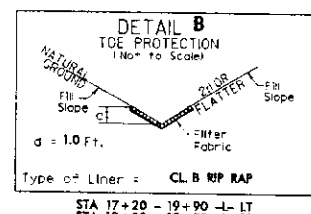
Table listing symbols for vegetation: Single Tree, Single Shrub, Hedge, Woods Line, Orchard, Vineyard.

RAILROADS

Table listing symbols for railroads: Standard Gauge, RR Signal Milepost, Switch.

5/20/99 05-AUG-2004 09:45 JBG:rdw/rdw

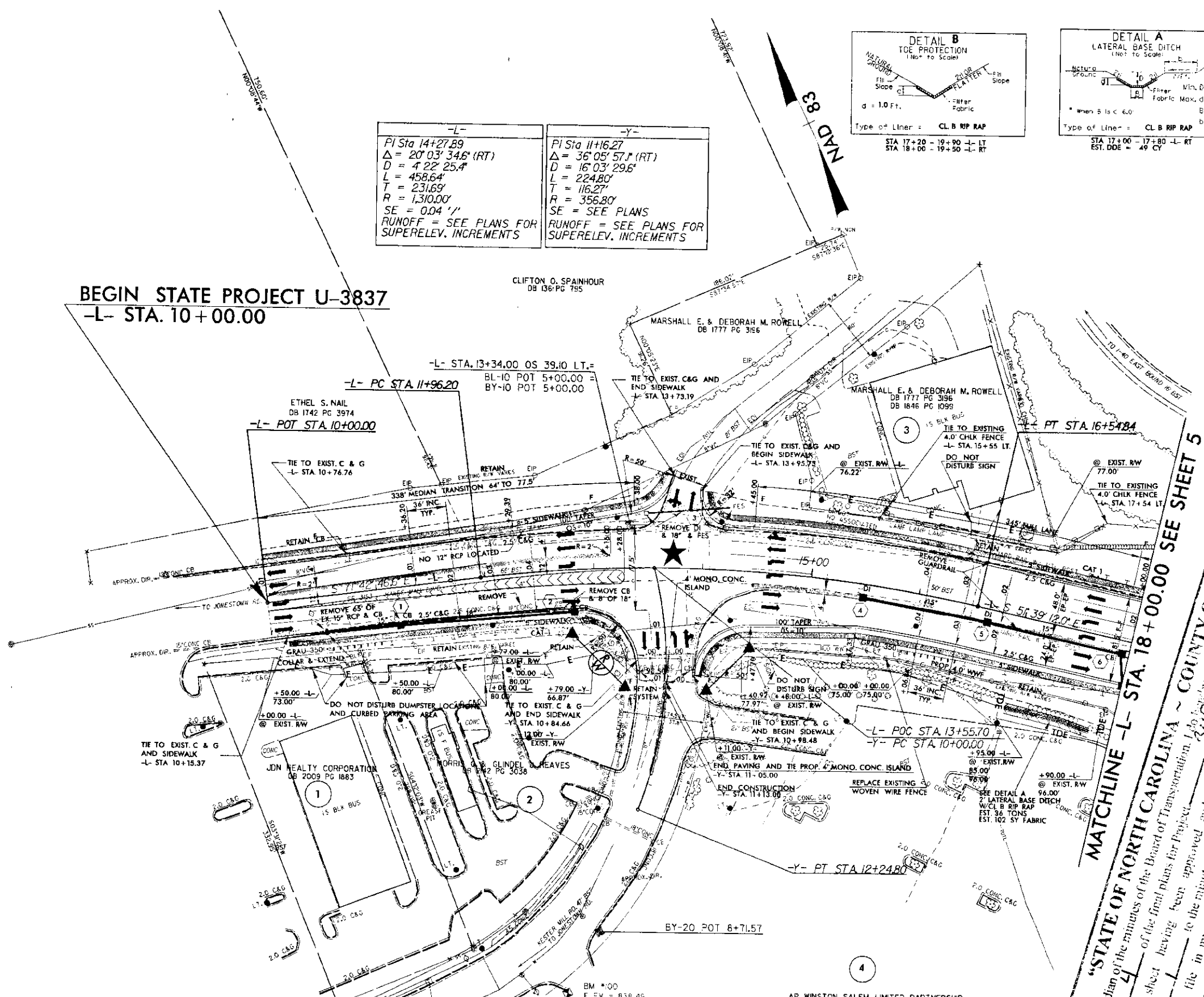
PROJECT REFERENCE NO. U-3837	SHEET NO. 4
RW SHEET NO.	
ROADWAY DESIGN ENGINEER	HYDRAULICS ENGINEER



-L-	-Y-
PI Sta 14+27.89	PI Sta 11+16.27
$\Delta = 20' 03' 34.6''$ (RT)	$\Delta = 36' 05' 57.1''$ (RT)
$D = 4' 22' 25.4''$	$D = 16' 03' 29.6''$
$L = 458.64'$	$L = 224.80'$
$T = 231.69'$	$T = 116.27'$
$R = 1,310.00'$	$R = 356.80'$
$SE = 0.04 \text{ \%/}$	$SE = \text{SEE PLANS}$
RUNOFF = SEE PLANS FOR SUPERELEV. INCREMENTS	RUNOFF = SEE PLANS FOR SUPERELEV. INCREMENTS

12872 22700	216 300	332 500	2004 ADT 2025	18132 30900
	1912 2100			6872 10400
				HANES MALL BLVD. (SR 3153)
				KESTER HILL RD. (SR 1126)
				8384 12500

BEGIN STATE PROJECT U-3837
-L- STA. 10+00.00



MATCHLINE -L- STA. 18+00.00 SEE SHEET 5

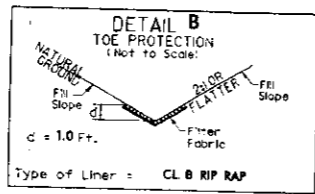
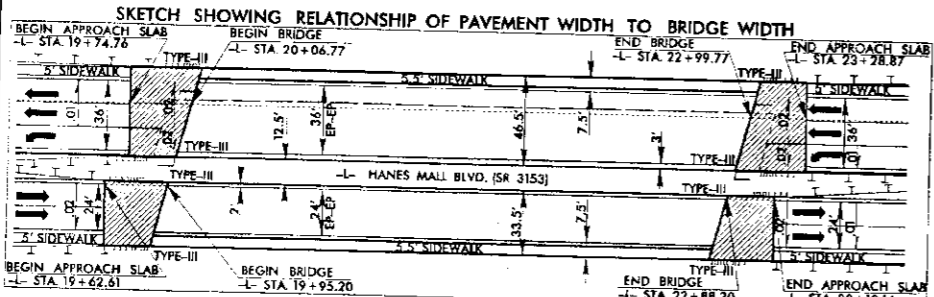
"STATE OF NORTH CAROLINA - COUNTY OF WAKE"
 As Custodian of the minutes of the Board of Transportation, I do hereby certify that this is a true and correct copy of
 Plan Sheet 4 of the final plans for Project 34988-2-1
 Addendum 1 to the minutes of the 6th day of October 2005 WHEREBY I have inclosed see my hand this the
 meeting on file in my office. IN TESTIMONY WHEREOF, I have inclosed see my hand this the
11 day of October 2005

 Secretary to Board of Transportation

DENOTES PAINTED ISLAND (SEE PAVEMENT MARKING PLANS)

SIGNALIZED INTERSECTION

SEE SHEET 9 FOR -L- PROFILE
SEE SHEET 12 FOR -Y- PROFILE



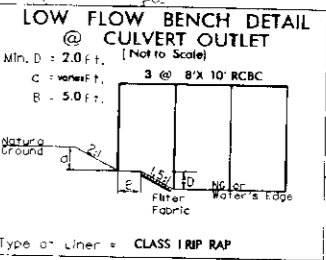
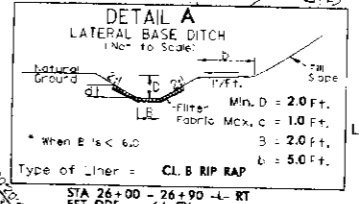
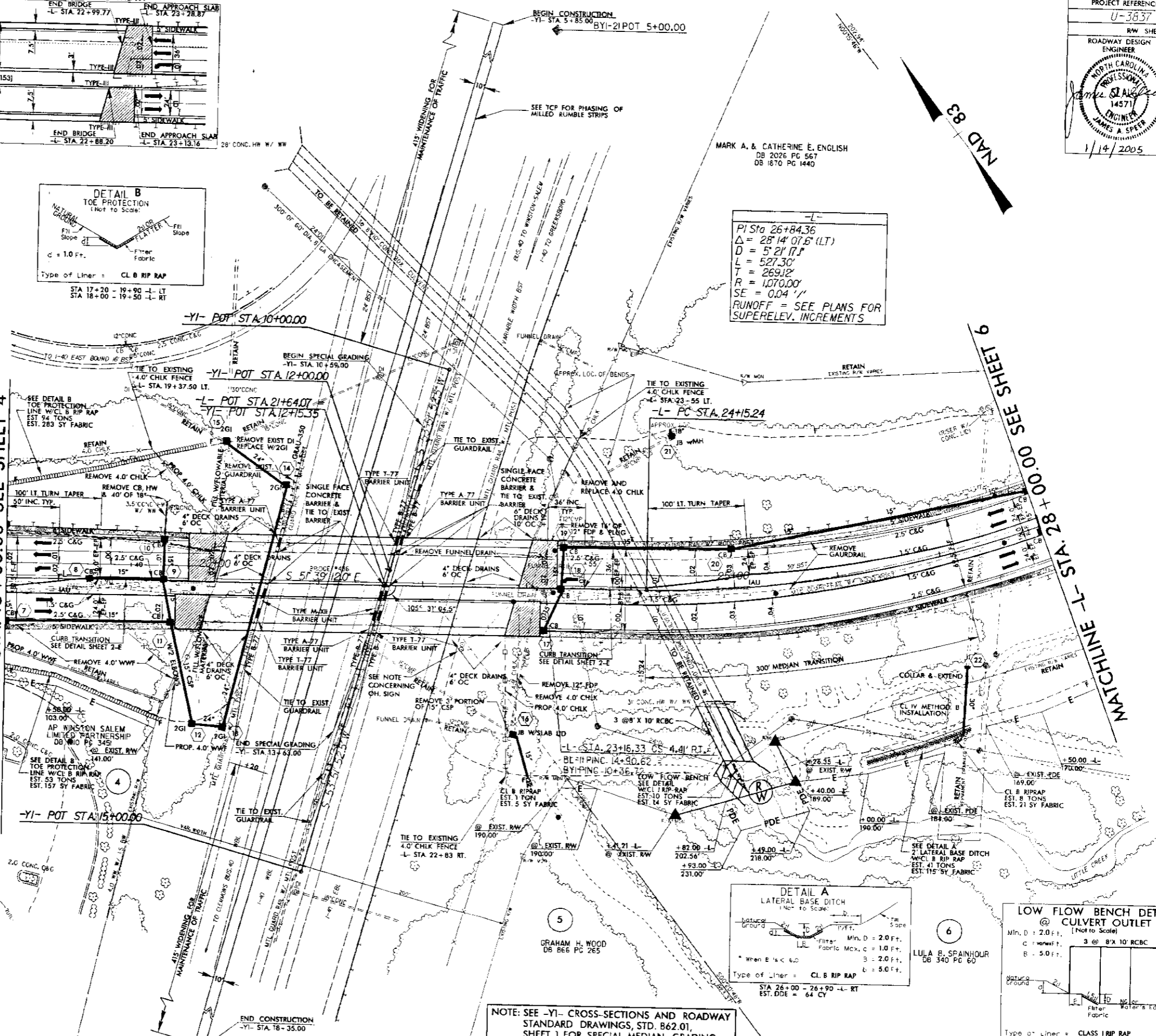
$P/ Sta 26+84.36$
 $\Delta = 28' 14" 07.6" (LT)$
 $D = 5' 2' 17.1"$
 $L = 527.30'$
 $T = 269.12'$
 $R = 1,070.00'$
 $SE = 0.04 1/1'$
 RUNOFF = SEE PLANS FOR SUPERELEV. INCREMENTS

PROJECT REFERENCE NO. U-3837	SHEET NO. 5
RW SHEET NO.	
ROADWAY DESIGN ENGINEER JAMES A. SPEER 1/14/2005	HYDRAULICS ENGINEER STEPHEN S. MORGAN 1/14/2005

"STATE OF NORTH CAROLINA - COUNTY OF WAKE"
 As Custodian of the minutes of the Board of Transportation, I do hereby certify that this is a true and correct copy of Plan Sheet 5 of the final plans for Project 34-988-21.
 said plan sheet having been approved and adopted by the Board of Transportation and identified as Addendum 1 to the minutes of the 6th day of Oct 2005 Board of Transportation meeting on file in my office. IN TESTIMONY WHEREOF, I have hereunto set my hand this the 11th day of October 2005.
Christina Daniels
 Secretary to Board of Transportation

MATCHLINE -L- STA. 18 + 00.00 SEE SHEET 4

MATCHLINE -L- STA. 28 + 00.00 SEE SHEET 9



NOTE: SEE -YI- CROSS-SECTIONS AND ROADWAY STANDARD DRAWINGS, STD. B62.01, SHEET 1 FOR SPECIAL MEDIAN GRADING.
 NOTE: -YI- STA. 12+50 OVERHEAD SIGN TO BE REMOVED AND REPLACED. SEE SIGNING PLANS

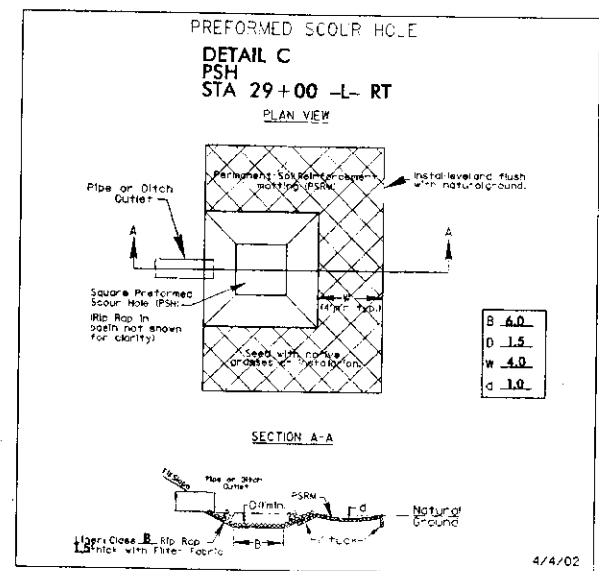
SEE SHEETS 9 & 10 FOR -L- PROFILE
 SEE SHEETS S-1 THRU S-78 FOR STRUCTURE PLANS
 SEE SHEETS C-1 THRU C-6 FOR CULVERT PLANS

SEE SHEETS TCP-1 THRU TCP-20 FOR TRAFFIC CONTROL PLANS

REVISIONS

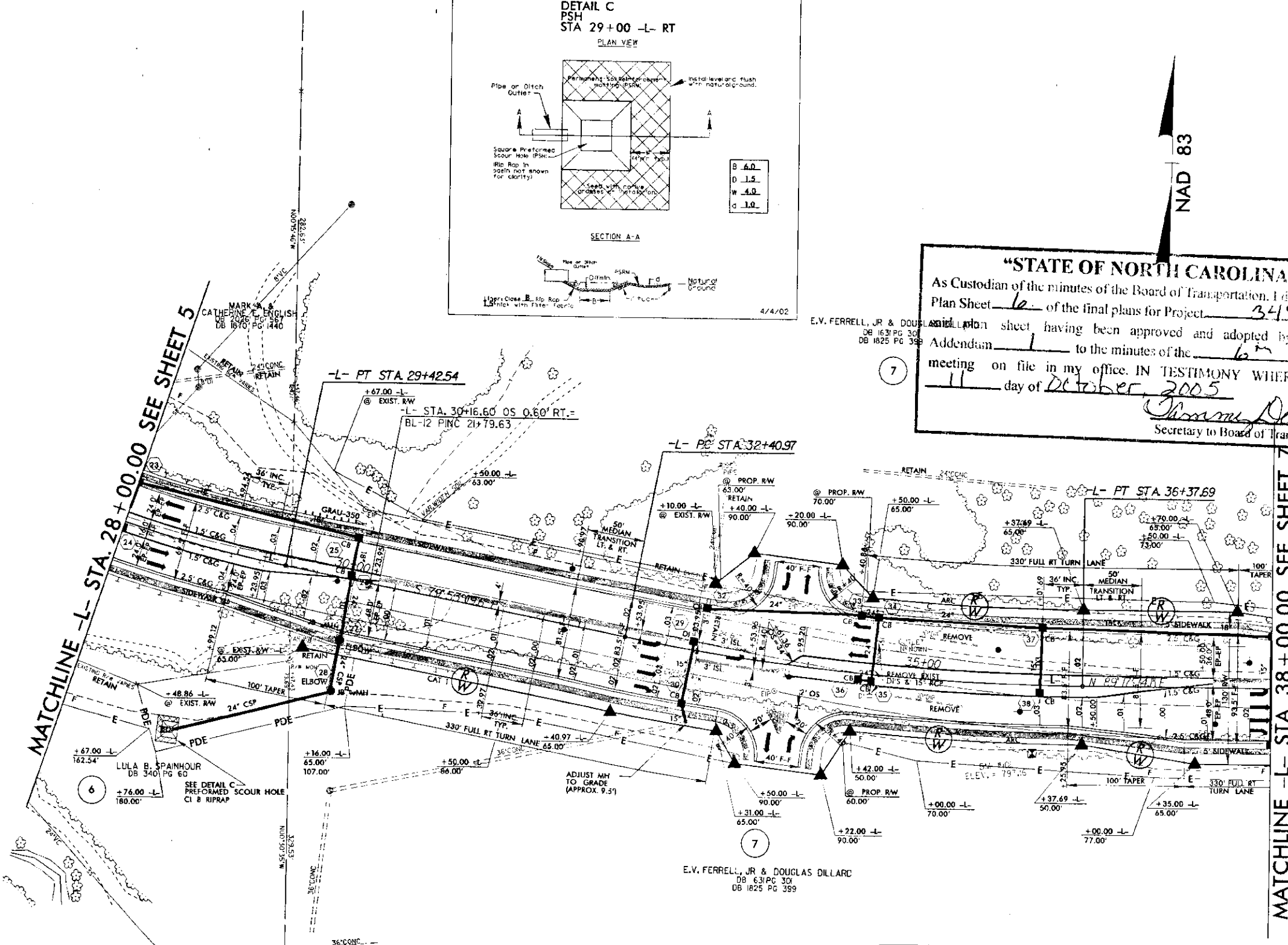
0/17/99

PROJECT REFERENCE NO. U-3837	SHEET NO. 6
RW SHEET NO.	
ROADWAY DESIGN ENGINEER NORTH CAROLINA PROFESSIONAL SEAL 14571 JAMES A. SPEER 1/14/2005	HYDRAULICS ENGINEER NORTH CAROLINA PROFESSIONAL SEAL 22100 STEPHEN B. MORROW 1/14/2005



"STATE OF NORTH CAROLINA - COUNTY OF WAKE"
As Custodian of the minutes of the Board of Transportation, I do hereby certify that this is a true and correct copy of Plan Sheet 6 of the final plans for Project 341988.2.1 and that said plan sheet having been approved and adopted by the Board of Transportation and identified as Addendum 1 to the minutes of the 6th day of Oct. 2005 Board of Transportation meeting on file in my office. IN TESTIMONY WHEREOF, I have hereunto set my hand this 11 day of October, 2005

Sharon Dennis
Secretary to Board of Transportation



E.V. FERRELL, JR & DOUGLAS DILLARD
DB 63 PG 30
DB 1825 PG 359

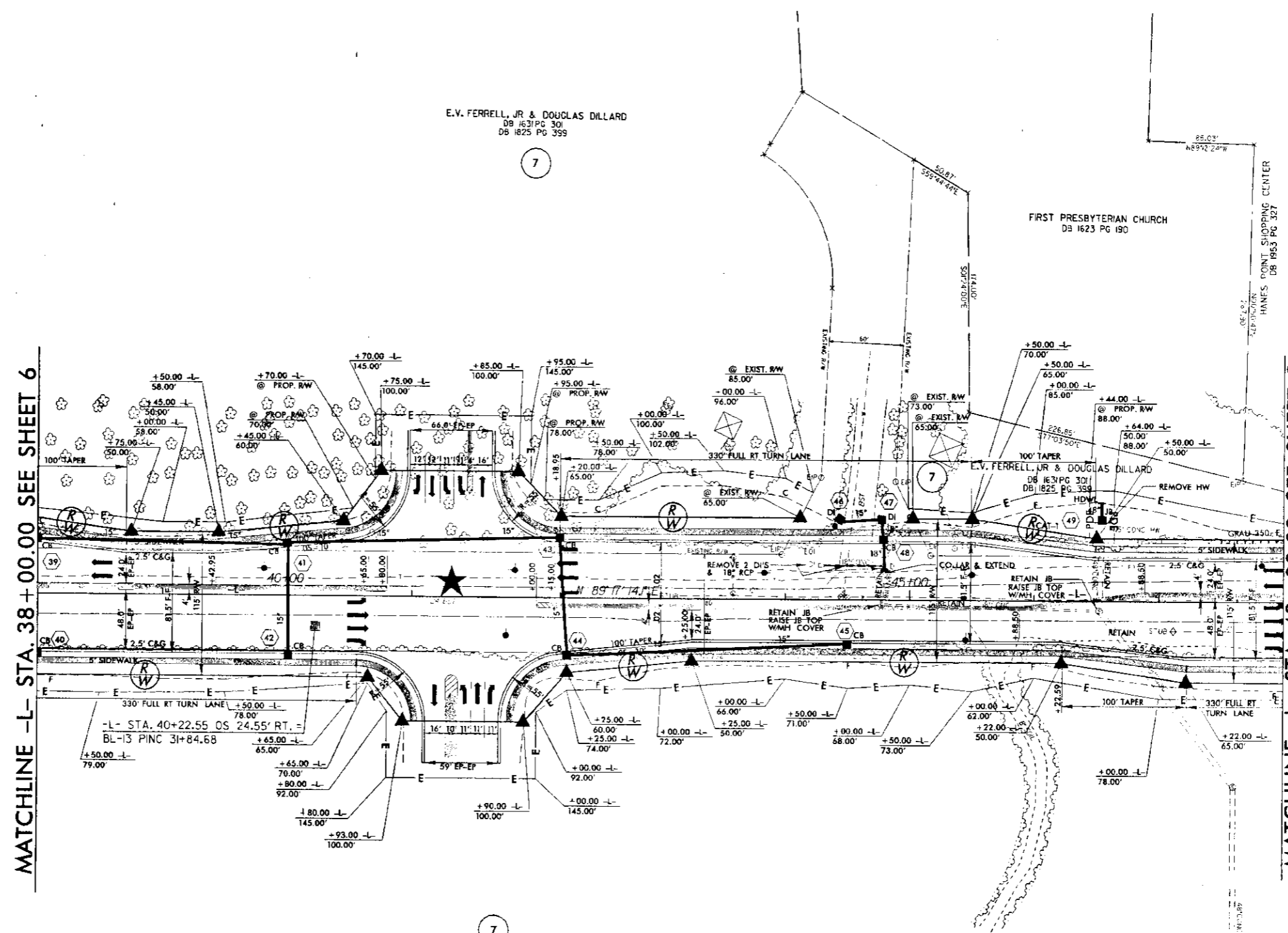
PI Sta 26+84.36 $\Delta = 28' 14' 07.6" (LT)$ $D = 5' 21' 17.1"$ $L = 527.30'$ $T = 269.12'$ $R = 1070.00'$ $SE = 0.04 \text{ '/'}$ RUNOFF = SEE PLANS FOR SUPERELEV. INCREMENTS	PI Sta 34+39.93 $\Delta = 10' 49' 26.3" (LT)$ $D = 2' 43' 42.1"$ $L = 396.72'$ $T = 198.95'$ $R = 2100.00'$ $SE = 0.03 \text{ '/'}$ RUNOFF = 108'
---	--

SEE SHEETS 10 & 11 FOR -L- PROFILE

12 JAN 2005 14:30
 12 JAN 2005 14:30
 12 JAN 2005 14:30

9/17/99

PROJECT REFERENCE NO. U-5837	SHEET NO. 7
RW SHEET NO.	
ROADWAY DESIGN ENGINEER	HYDRAULICS ENGINEER
11/17/2005	11/17/2005



E.V. FERRELL, JR & DOUGLAS DILLARD
DB 1631 PG 301
DB 1825 PG 399

7

FIRST PRESBYTERIAN CHURCH
DB 1623 PG 190

HAMES POINT SHOPPING CENTER
DB 1963 PG 327



MATCHLINE -L- STA. 38 + 00.00 SEE SHEET 6

MATCHLINE -L- STA. 48 + 00.00 SEE SHEET 8

E.V. FERRELL, JR & DOUGLAS DILLARD
DB 1631 PG 301
DB 1825 PG 399

7

"STATE OF NORTH CAROLINA ~ COUNTY OF WAKE"
As Custodian of the minutes of the Board of Transportation, I do hereby certify that this is a true and correct copy of Plan Sheet 7 of the final plans for Project 34988.21 said plan sheet having been approved and adopted by the Board of Transportation and identified as Addendum 1 to the minutes of the 6th day of Oct. 2005 Board of Transportation meeting on file in my office. IN TESTIMONY WHEREOF, I have hereunto set my hand this 11 day of October, 2005
Thomas Deans
Secretary to Board of Transportation

DENOTES PAINTED ISLAND (SEE PAVEMENT MARKING PLANS)

SIGNALIZED INTERSECTION
SEE SHEET 11 FOR -L- PROFILE

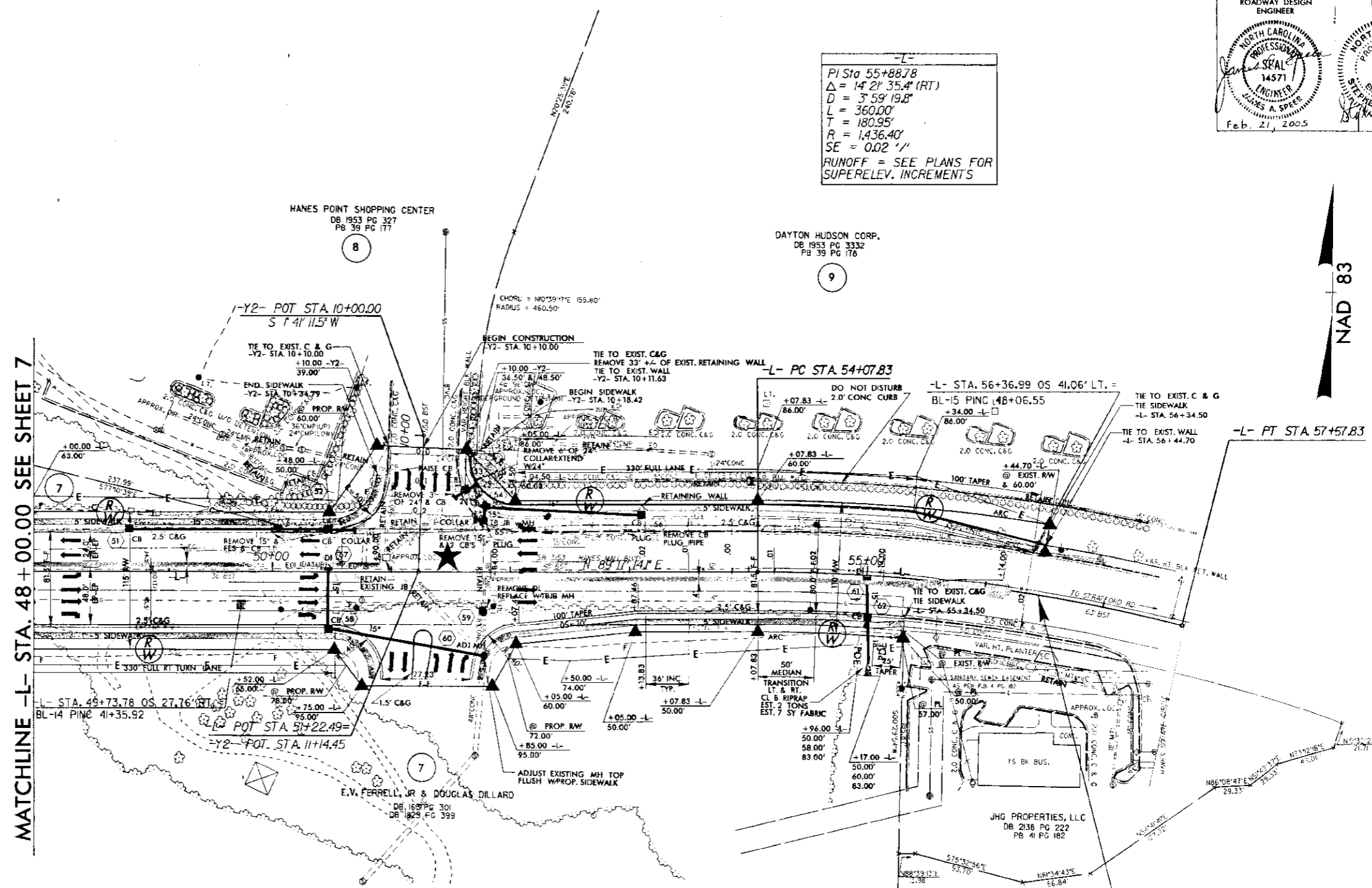
REVISIONS

PLAN 2005 0825
11/17/2005
11/17/2005

8/17/05

PROJECT REFERENCE NO. U-3837	SHEET NO. 8
RW SHEET NO.	
ROADWAY DESIGN ENGINEER	HYDRAULICS ENGINEER

-L-
 PI Sta 55+88.78
 $\Delta = 14' 21" 35.4" (RT)$
 $D = 3' 59" 19.8"$
 $L = 360.00'$
 $T = 180.95'$
 $R = 1,436.40'$
 $SE = 0.02 \text{ \%/}$
 RUNOFF = SEE PLANS FOR SUPERELEV. INCREMENTS



MATCHLINE -L- STA. 48 + 00.00 SEE SHEET 7

END STATE PROJECT U-3837
 -L- STA. 56 + 45.00

“STATE OF NORTH CAROLINA ~ COUNTY OF WAKE”

As Custodian of the minutes of the Board of Transportation, I do hereby certify that this is a true and correct copy of Plan Sheet 8 of the final plans for Project 34938 2.1 said plan sheet having been approved and adopted by the Board of Transportation and identified as Addendum 1 to the minutes of the 6th day of Oct 2005 Board of Transportation meeting on file in my office. IN TESTIMONY WHEREOF, I have hereunto set my hand this the 11 day of October, 2005

James A. Speer
 Secretary to Board of Transportation

SIGNALIZED INTERSECTION
 SEE SHEET 11 FOR -L- PROFILE
 SEE SHEET 12 FOR -Y2- PROFILE
 SEE SHEETS W-1 THRU W-2 FOR WALL PLANS

REVISIONS

10-FEB-2005 13:42
 D:\work\3837\plan